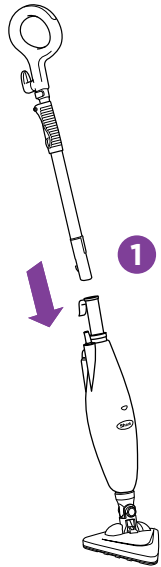


Shark®

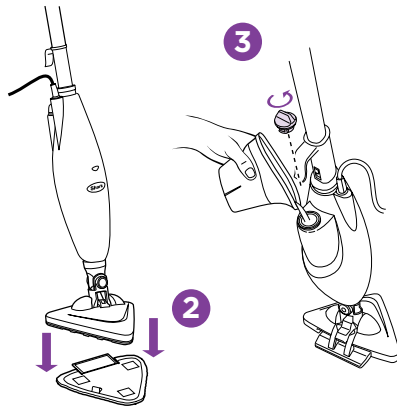
Shark®
Steam
Lite
S3255

QUICK START GUIDE: Simple steps to get you cleaning and sanitising with your new Shark® Steam Lite Steam Mop S3255.



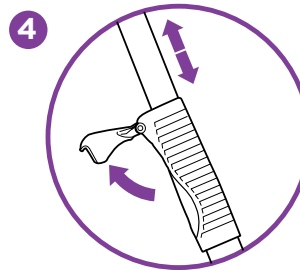
ASSEMBLE

- 1 Fit the tube into the mop body as shown in the illustration.
- 2 Place the cleaning pad underneath the mop head, with fastener strips facing up. Press the mop to the pad to attach it.



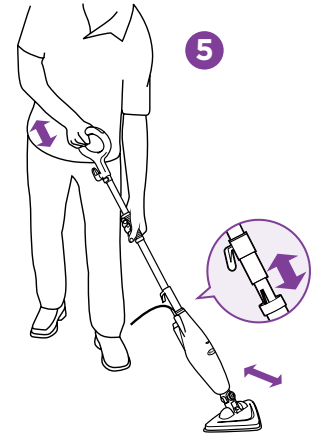
FILL

- 3 Remove the cap to fill the water tank. Use the filling flask to fill the tank with water to the "MAX" fill line. Replace the water tank cap.



ADJUSTABLE TELESCOPING HANDLE

- 4 For your comfort, you can adjust the height of the mop. Just lift the latch on the tube 90 degrees to the open position. Holding the handle, extend the tube to the desired height and then close the latch to the locked position.



STEAM CLEANING

- 5 Plug in the mop. Wait 30 seconds for the unit to heat up and the steam to be ready.
Push the handle toward the mop head in a pumping motion. Customise steam output by slow or fast mopping with a forward and backward motion.