

Please be sure to read the enclosed Shark® Owner's Guide prior to using your unit.

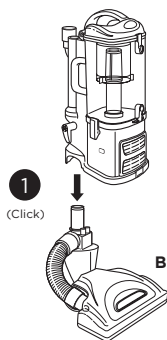
Shark® Navigator™ LIFT-AWAY® PRO

QUICK START GUIDE

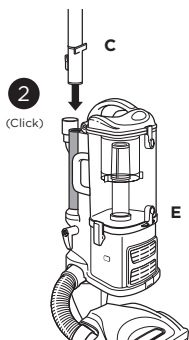
WHAT'S INSIDE

- A** Handle with Stretch Hose
- B** Floor Nozzle
- C** Extension Wand
- D** Accessory Holder
- E** Portable Lift-Away® Canister
- F** 8" Crevice Tool
- G** Dusting Brush
- H** Wide Upholstery tool

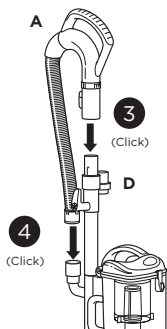
ASSEMBLY



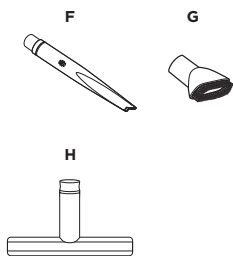
Insert canister into motorized floor nozzle.



Insert wand into the canister.

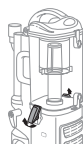


Connect handle to the wand, pressing until it clicks into place. Connect hose to the back of the canister pressing until it clicks into place.



MAINTENANCE

Empty dust cup after each use



Pull up on Dust Cup Release latch and lift dust cup off canister.



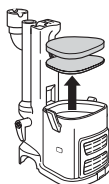
Hold Dust Cup over a trash bin and press the empty-release latch on the bottom.



Press top Dust Cup Release latch to access dust screen and remove built-up debris as required.

Cleaning Filters

Pre-Motor



Post-Motor



TIP:

Wash filters every 3 months to keep the suction strong.

Rinse filters and allow to air-dry completely. Tap loose dirt from foam filters as needed between washes.

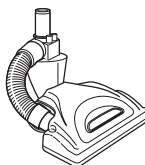
Pre-Motor (foam and felt):

With the dust cup removed, take out and rinse the foam and felt filters with water only.

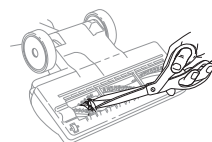
Post-Motor (HEPA):

To access the HEPA filter, reach under the grill and pull the Filter Access latch to remove the grill. Remove and rinse the HEPA filter with water only. Let all filters air-dry completely before reinstalling.

Easy brushroll maintenance



Detach the motorized nozzle from the portable Lift-Away canister.



Remove any string, carpet fibers, or hair that may be wrapped around the brushroll.

VERSATILE FLOOR-TO-CEILING CLEANING

FLOOR CLEANING

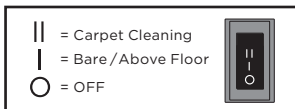
1 Plug In Vacuum

Then place your foot gently on the floor nozzle and tilt the handle back.



2 Choose Setting

Slide the power switch to the appropriate floor setting and start cleaning.



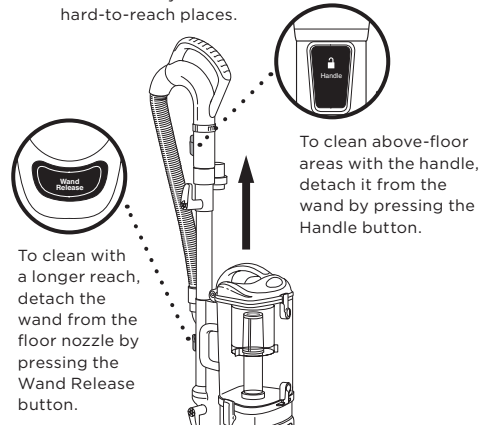
BRUSHROLL ON/OFF:

- 1 Press the **ON/OFF** switch at the top of the canister to the I position to vacuum bare floors (straight suction only) or use Lift-Away® mode. To vacuum carpets and rugs, set the switch to the II position to engage the motorized brushroll.
- 2 Press the floor nozzle down with your foot and tilt the handle back towards you to engage the brushroll.

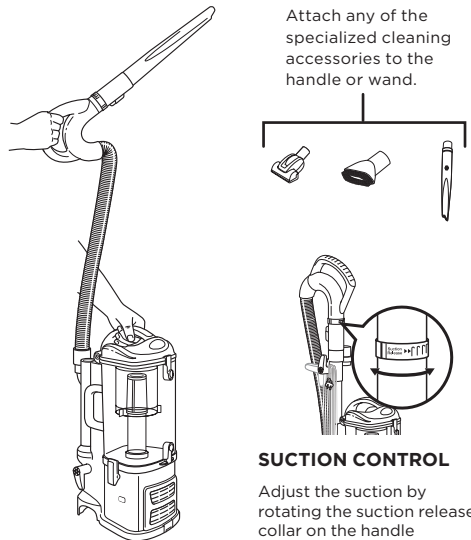
PORTABLE LIFT-AWAY® MODE

1 Plug In Vacuum

Press Lift-Away button to lift canister off floor nozzle. You are now ready to clean those hard-to-reach places.



2 Attach desired cleaning accessory.



For questions or to register your product, contact us at 1-800-798-7398 or visit us online at sharkclean.com

