

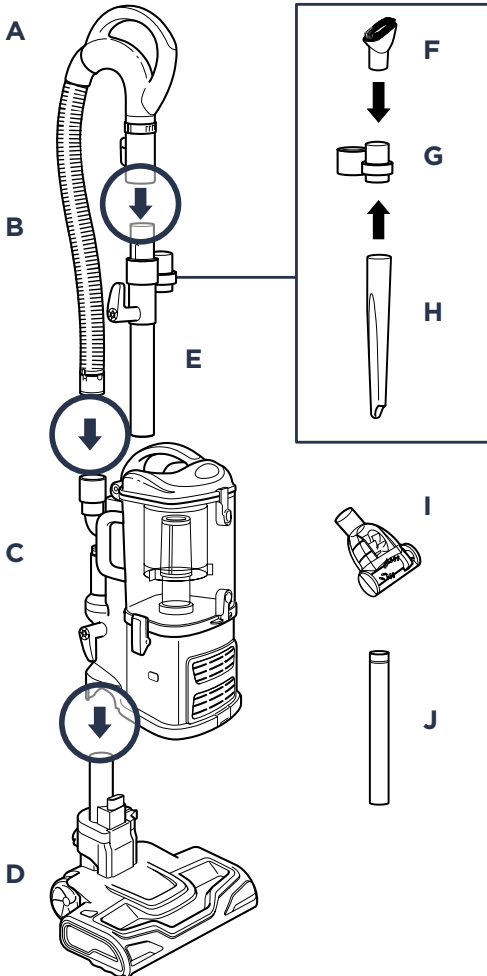
# Shark® Navigator® LIFT-AWAY™ PRO

## QUICK START GUIDE

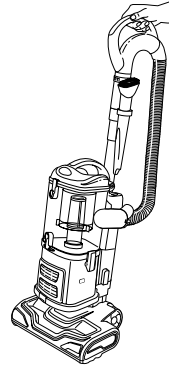
### WHAT'S INSIDE

- |                                |                           |
|--------------------------------|---------------------------|
| <b>A</b> Handle                | <b>F</b> Dusting Brush    |
| <b>B</b> Stretch Hose          | <b>G</b> Accessory Holder |
| <b>C</b> Portable Lift-Away    | <b>H</b> Crevice Tool     |
| <b>D</b> Motorized Floor Brush | <b>I</b> Pet Power Brush  |
| <b>E</b> Extension Wand        | <b>J</b> Extension Wand   |

### ASSEMBLY

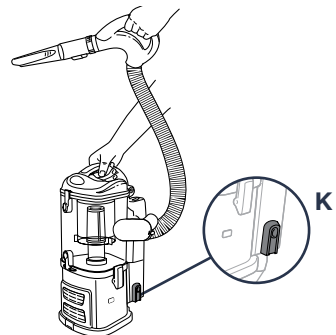


### UPRIGHT VACUUM



- 1 Attach floor nozzle (**D**) into the bottom of the canister (**C**).
- 2 Insert extension wand (**E**) into the back of the canister, slide on the accessory holder (**G**) and place the on-board tools (**F**, **H**).
- 3 Insert handle (**A**) into the top of the extension wand and connect the hose (**B**) to the back of the canister.

### PORTABLE LIFT-AWAY



- 1 Press handle release button to detach handle (or handle with extension wand).
- 2 Press red nozzle release button (**K**), place foot on nozzle and pull the canister up.
- 3 Attach desired tools to clean.

**! IMPORTANT:** Loss of suction may occur if foam filters are not cleaned every 3 months. Rinse and allow to air dry completely. Also, tap loose dirt off filter between washes as needed. Foam filters may appear dirty after use - this is normal. Please refer to the instruction booklet for instructions on cleaning the filters.

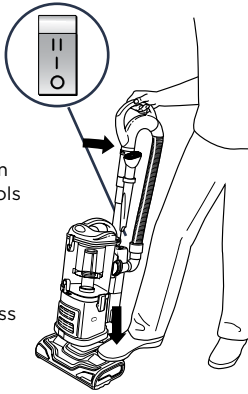
## BRUSHROLL

**|| BRUSHROLL ON**  
Engage the motorized floor brush to vacuum carpets and rugs.

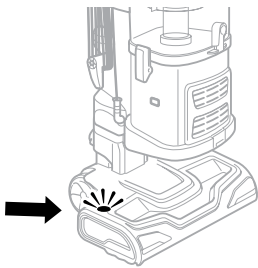
**| BARE FLOOR**  
Use to vacuum in Lift-Away™ mode, to vacuum bare floors, or to use tools (straight suction only).

**○ OFF**

To engage the brushroll, press the floor nozzle down with your foot and tilt the handle back towards you.

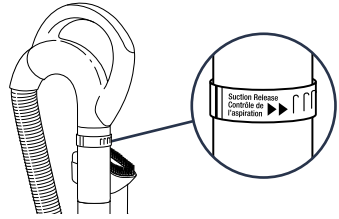


## INDICATOR LIGHT



The motorized brush indicator light will illuminate Green when motorized floor brush is on. If there is a blockage or jam, the light will turn Red.

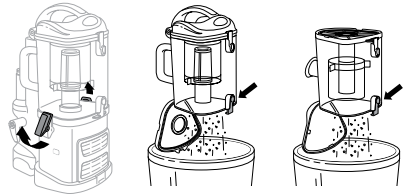
## SUCTION CONTROL



This vacuum has huge suction power. The suction can be adjusted to make the vacuum easier to push and pull on certain types of carpets as needed.

Adjust the amount of suction by rotating the suction release collar on the handle counterclockwise to reduce the suction or clockwise for maximum suction.

## EMPTYING THE DUSTCUP



- 1 Pull up the latches on the sides of the dust cup to release.
- 2 Hold the dust cup over a trash receptacle and press the bottom door release button.
- 3 If needed, turn the dust cup upside down over the trash and press the top door release button.

## CLEANING FILTERS

- 1 With the dust cup removed, pull the 2 filters out from the top of the motor base.
- 2 Rinse the filters thoroughly in lukewarm water until the water runs clear.
- 3 Squeeze out excess water and let air-dry for at least 24 hours before inserting back into the vacuum.

