

***Shark* HYDROVAC**

Corded 3-in-1 Cleaner

WD100 Series

INSTRUCTION BOOKLET



IMPORTANT SAFETY INSTRUCTIONS

FOR HOUSEHOLD USE ONLY.

READ ALL INSTRUCTIONS BEFORE USING THIS 3-IN-1 CLEANER

⚠ WARNING

To reduce the risk of fire, electric shock, injury, or property damage:

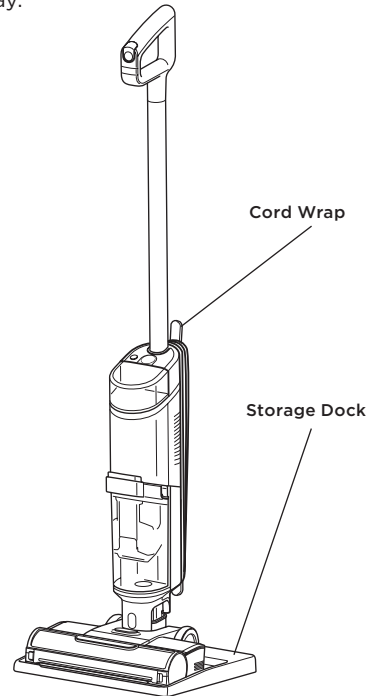
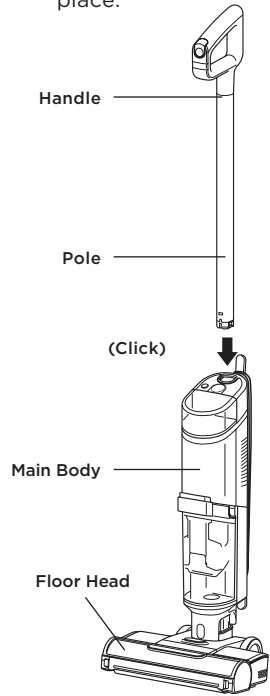
1. If the power cord plug does not fit fully into the outlet, contact the place of purchase. **DO NOT** force into outlet or try to modify to fit.
2. To reduce the risk of shock and unintended operation, turn off power before servicing.
3. This 3-in-1 Cleaner consists of a motorised nozzle, main body, pole, and handle. These components contain electrical connections, electrical wiring, and moving parts that potentially present risk to the user.
4. Before each use, carefully inspect all parts for any damage. If a part is damaged, discontinue use.
5. Use only identical replacement parts.
6. Use only as described in this Owner's Guide Instruction Booklet. **DO NOT** use the 3-in-1 Cleaner for any purpose other than those described in this Instruction Booklet.
7. **DO NOT** immerse or spray water on the body of the 3-in-1 Cleaner. To clean the surface, wipe with a dry cloth.
8. 3-in-1 Cleaner and dock's cord out of reach of children. **DO NOT** allow the appliance to be used by children. **DO NOT** allow to be used as a toy. Close supervision is necessary when used near children.
9. This appliance can be used by persons with reduced physical, sensory or mental capabilities or lack of experience or knowledge if they have been given supervision or instruction concerning use of the appliance in a safe way and understand the hazards involved. Cleaning and user maintenance should not be done by children.
10. Always turn off the 3-in-1 Cleaner before connecting or disconnecting any current-carrying hoses, motorised nozzles, chargers, or other electrical or mechanical parts.
11. **DO NOT** handle plug or 3-in-1 Cleaner with wet hands.
12. **DO NOT** use without the dirty water tank, clean solution tank, filter, brushroll, and brushroll cover in place.
13. Only use Shark® branded filters and accessories.
14. **DO NOT** put any objects into nozzle or accessory openings. **DO NOT** use with any opening blocked; keep free of dust, lint, hair, and anything that may reduce airflow.
15. **DO NOT** use if nozzle or accessory airflow is restricted. If the air paths or the motorised floor nozzle becomes blocked, turn the 3-in-1 Cleaner off. Remove all obstructions before you turn on the unit again.

16. Keep nozzle and all 3-in-1 Cleaner openings away from hair, face, fingers, uncovered feet, or loose clothing.
17. **DO NOT** use if 3-in-1 Cleaner is not working as it should, or has been dropped, damaged, left outdoors, or dropped into water.
18. Use extra care when cleaning on stairs.
19. **DO NOT** leave the 3-in-1 Cleaner unattended while powered on.
20. When powered on, always keep the 3-in-1 Cleaner moving over the carpet surface to avoid damaging the carpet fibres.
21. **DO NOT** place 3-in-1 Cleaner on unstable surfaces such as chairs or tables.
22. **DO NOT** use to pick up:
 - a) Large objects
 - b) Hard or sharp objects (glass, nails, screws, or coins)
 - c) Large quantities of dust (including drywall, fireplace ash, or embers).
 - d) Smoking or burning objects (hot coals, cigarette butts, or matches)
 - e) Flammable or combustible materials (lighter fluid, petrol, or kerosene)
 - f) Toxic materials (chlorine bleach, ammonia, or drain cleaner)
23. **DO NOT** use in the following areas:
 - a) Poorly lit areas
 - b) Outdoor areas
 - c) Spaces that are enclosed and may contain explosive or toxic fumes or vapours (lighter fluid, petrol, kerosene, paint, paint thinners, mothproofing substances, or flammable dust).
24. Turn off the 3-in-1 Cleaner before any adjustment, cleaning, maintenance, or troubleshooting.
25. During cleaning or routine maintenance, **DO NOT** cut anything other than hair, fibres, or string wrapped around the brushroll.
26. Allow all filters to air-dry completely before reinstalling them in the 3-in-1 Cleaner to prevent liquid from being drawn into electric parts.
27. **DO NOT** modify or attempt to repair the 3-in-1 Cleaner yourself, except as indicated in this Instruction Booklet. **DO NOT** use the 3-in-1 Cleaner if it has been modified or damaged.
28. Use only Shark brand cleaning fluids intended for use with this appliance to prevent internal component damage.
29. The 3-in-1 Cleaner will not run without sufficient water supply in the clean solution tank.

SAVE THESE INSTRUCTIONS

ASSEMBLY

1. Align the **Pole** with the opening in the **Main Body** and insert it until it clicks into place.
2. Place the **Storage Dock** on the floor near a wall outlet. Place the 3-in-1 Cleaner on the tray.

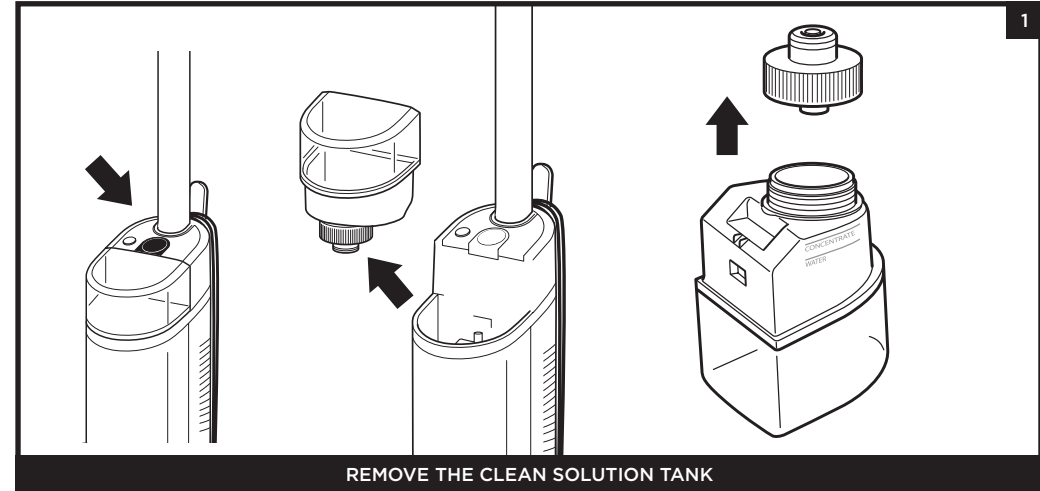


NOTE: To remove the handle, press the release button located on the back of the unit with a thin tool while pulling up on the handle.

NOTE: When assembling your Hydrovac, there may be a little water in or around the water tanks. This is because we test all our HydroVacs before you buy them to ensure the highest quality.

USING YOUR 3-IN-1 CLEANER

FILLING THE CLEAN SOLUTION TANK



Press the release button and lift off the **Clean Solution Tank**.



Unscrew the cap and add water to the tank, up to the **WATER** line. Next, add Shark HydroVac Multi-Surface Concentrate, filling to the **HYDROVAC CONCENTRATE** line. Replace the cap and reinsert the tank until it clicks into place. The top of the tank should be flush with the top of the body.

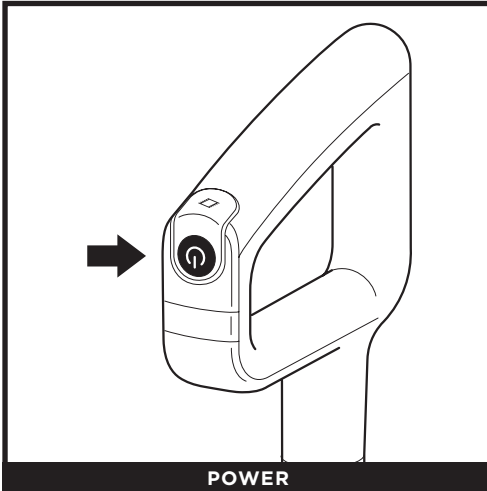
NOTE: Only use Shark HydroVac Multi-Surface Cleaning Solution and water with this product.

NOTE: Be sure to not overfill the Clean Solution Tank with more HydroVac Multi Surface Concentrate than instructed, as this may cause streaking.

NOTE: Without sufficient water supply in the clean solution tank, HydroVac will not run.

USING YOUR 3-IN-1 CLEANER

CONTROLS

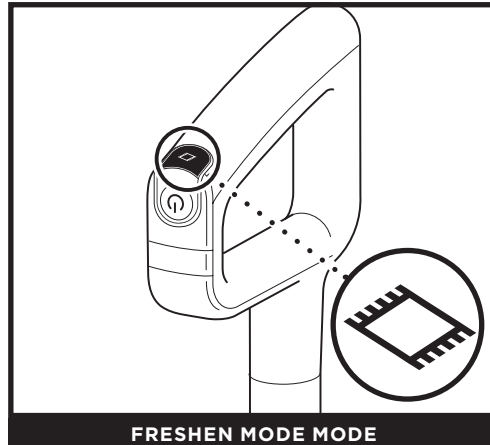


Press and release the **Power** button on the handle to turn on power. To turn off power, press the button again.

CLEANING MODES



Use Hard Floor mode for powerful cleaning on bare floors. To activate Hard Floor mode, turn on the unit and tilt the handle back.



To clean area rugs, press the Freshen Mode icon on top of the handle. The Freshen Mode light on the main body will illuminate. To turn off Freshen Mode mode, press the button again.

NOTE: To prevent leakage, DO NOT place the main body on the floor. The nozzle should always be kept flat on the floor.

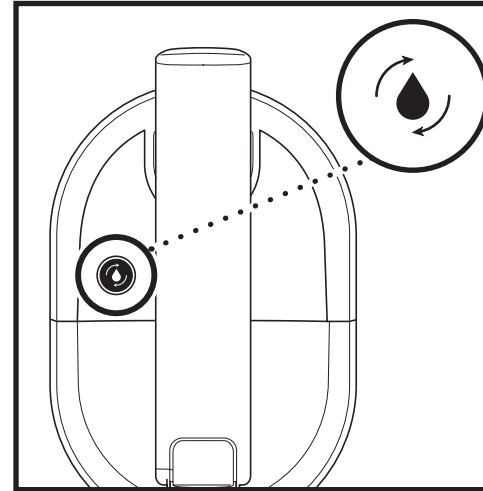
NOTE: If you encounter a difficult stain, use Freshen Mode for improved stain cleaning.

NOTE: If you encounter a stubborn odor on your floor or area rug, continue to clean in Freshen Mode until the odor is gone.

NOTE: If your floors are cloudy, streaky, or spotty after cleaning, it may be due to accumulated soap or grease residue. The floor may require several cleanings with the Hydrovac.

MAINTAINING YOUR 3-IN-1 CLEANER

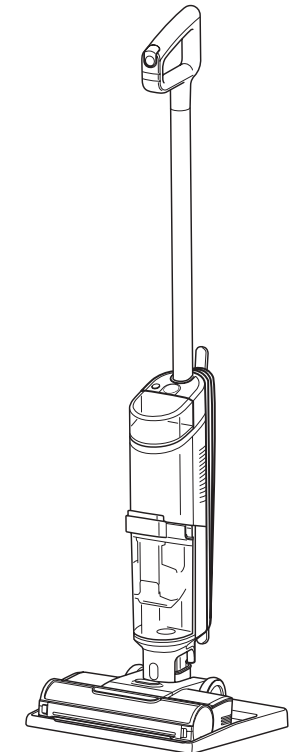
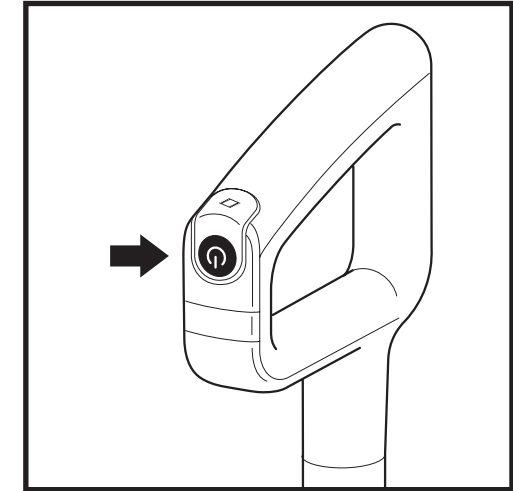
SELF-CLEANING MODE



RECOMMENDED AFTER EVERY USE

1. Place the unit on the Storage Dock. The Self-Clean mode icon located on the top of the main body will pulse.
2. Empty the **Dirty Water Tank** and make sure the clean solution tank is at least half full.
3. Press the **Power Button** to start the self-clean cycle. The icon will illuminate for the full 2-minute duration of the cycle.
4. **DO NOT** remove the unit from the tray during the self-cleaning cycle. The icon will turn off when the cycle is complete.
5. Empty the dirty water tank.

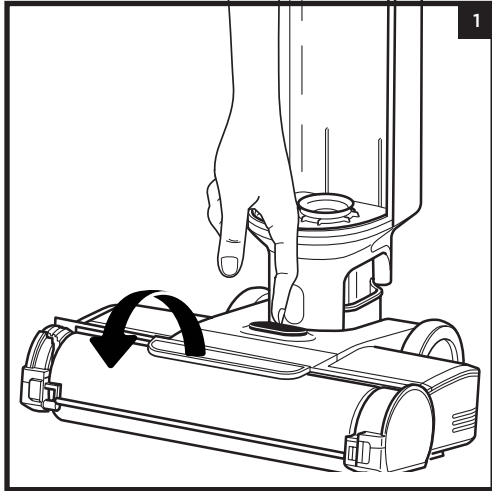
See **Troubleshooting** for more information on Self-Clean information.



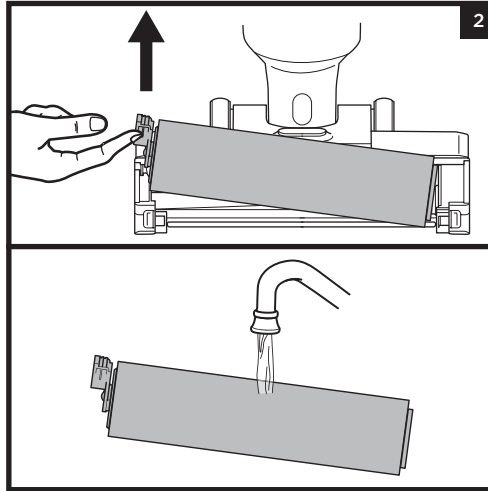
NOTE: Make sure the clean solution tank is at least half full and that the dirty water tank is empty before running the self-cleaning cycle.

MAINTAINING YOUR 3-IN-1 CLEANER

CLEANING THE BRUSHROLL

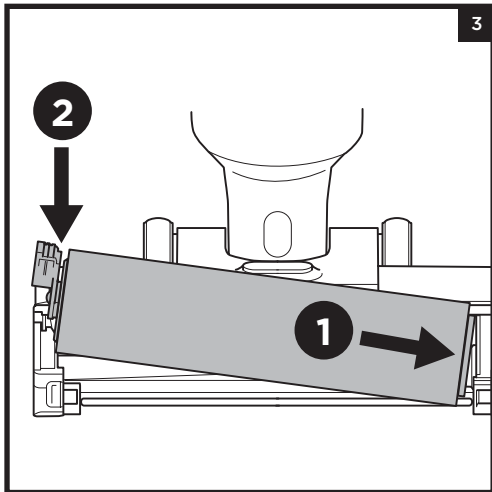


1. To access the brushroll, press the button on the top of the nozzle and lift off the brushroll cover.

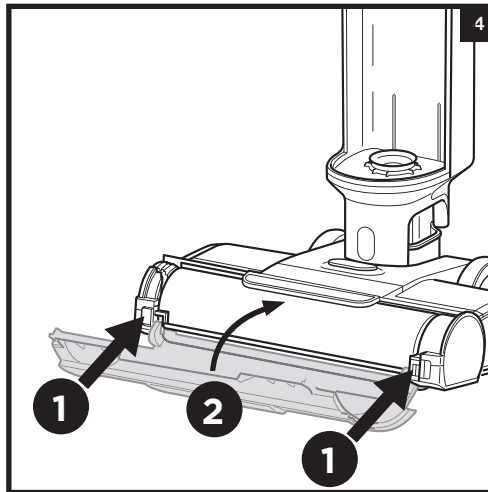


2. Remove the brushroll by pulling up on the pull tab on the left side of the nozzle.

Wash thoroughly with warm water. Allow the brushroll to air-dry completely in a well-ventilated area for at least 24 hours.



3. Reinsert the brushroll by lining up the grooves on the end of the brushroll with the helix on the inner right side of the nozzle, then press down on the left side of the brushroll. When properly installed, the brushroll tab will be flush with the left side of the nozzle.

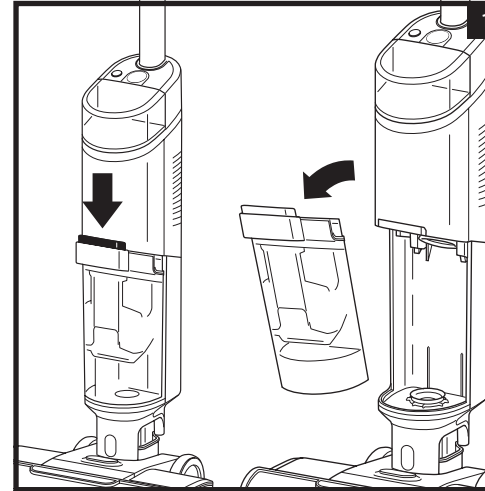


4. To reinstall the brushroll cover, insert the hooks on the bottom of the cover into the unit first. Press down on the cover until it clicks into place.

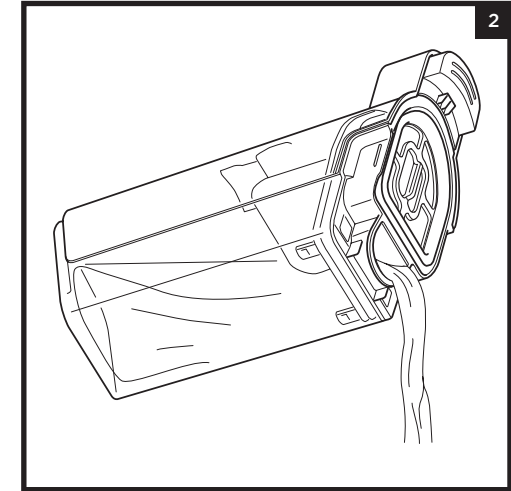
NOTE: Do not place brushroll in washing machine or dishwasher. Replace the brushroll after 6 months.

MAINTAINING YOUR 3-IN-1 CLEANER

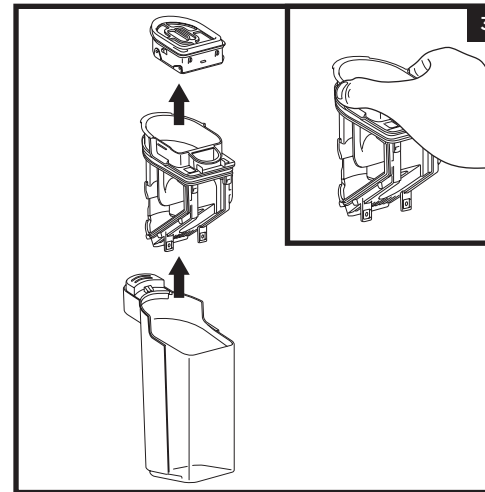
CLEANING THE DIRTY WATER TANK



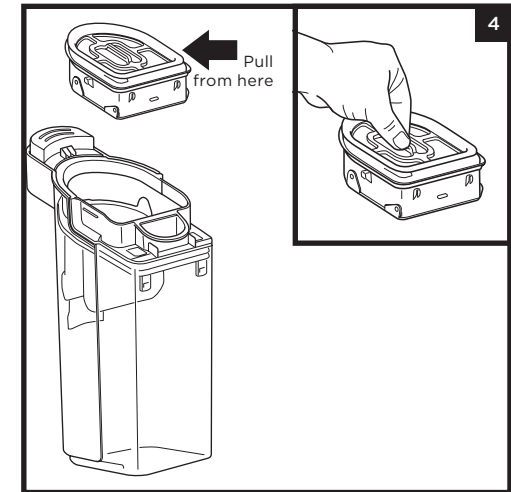
1. To remove the dirty water tank, press the release button and pull out the tank.



2. To dispose of liquid waste only, pour it out through the **Express Clean Spout** on the back of the dirty water tank.



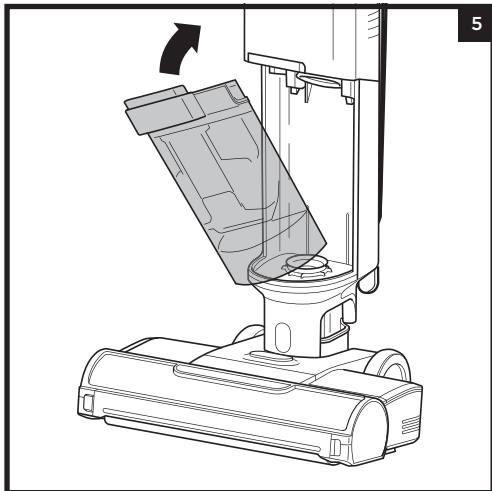
3. To dispose of solid debris, lift out the **Solids Separator**. Grasp the recessed areas on the sides of the separator and lift it out. Empty the solid debris into the trash. If any liquid waste remains in the tank, pour it down a drain. To clean, rinse the separator and the tank with water.



4. Clean the filter in the top of the solids separator every month. Pull out the filter and hand-wash with warm water and soap. Allow the filter to air-dry completely in a well-ventilated area before reinstalling it.

NOTE: Replace the filter every **6 Months**.

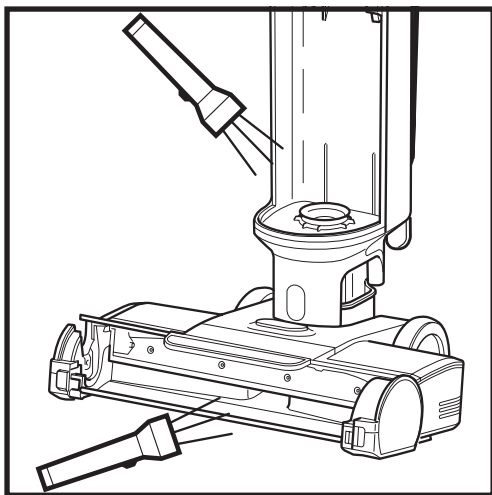
NOTE: Do not place dirty water tank in washing machine or dishwasher.



5. After cleaning the dirty water tank and the solids separator, allow them to air-dry in a well-ventilated area for at least 24 hours. To reinstall the tank, insert the bottom into the opening in the main body, then tilt the tank back until it clicks into place.

CHECKING FOR BLOCKAGES

If you run over a hard or sharp object or notice a noise change while using your unit, check for blockages or objects caught in the brushroll, nozzle chamber, or inlet hose.



1. Turn off the power.
2. Remove the brushroll cover, brushroll, and dirty water tank.
3. Check the openings and remove all debris.
4. When finished, reinstall the brushroll and the cover.

TROUBLESHOOTING

⚠ WARNING: To reduce the risk of shock and unintended operation, turn off power before servicing.

LED INDICATOR	WHAT IT MEANS	WHAT TO DO
<p>The Water Droplet LED is pulsing red.</p>	The dirty water tank is full.	Empty the fluid in the dirty water tank. *If this is a false error, remove solids separator and clean completely. Allow part to dry for 24 hours or dry manually.
<p>The Water Droplet LED is pulsing aqua.</p>	The clean solution tank is empty.	Fill the clean solution tank. Refer to the "Filling the Clean Solution Tank" section.
<p>The Freshen Mode icon and the three water droplet lights are flashing red at the same time.</p>	Brushroll cover is not installed properly.	Refer to the "Cleaning the Brushroll" section, step 4
<p>The Freshen Mode icon and the three water droplet lights are flashing red out of sync.</p>	The brushroll is jammed.	Turn off the power before cleaning the brushroll and any debris that may be causing the jam. Refer to the "Cleaning the Brushroll" section.
<p>Self-Clean icon and droplets are flashing blue.</p>	Not enough solution to run Self-Clean Cycle.	Fill clean solution tank to allow self-clean cycle to run.
<p>Self-Clean icon and droplets are flashing red.</p>	Dirty water tank is full and preventing Self-Clean Cycle to run.	Empty dirty water tank to allow self-clean cycle to run.

ORDERING REFILLS AND PARTS

Replace the filter and brushroll every 6 months. Only use Shark HydroVac™ Disinfectant, Shark HydroVac Concentrate, or water with the Shark HydroVac. To order brushrolls, filters, Shark HydroVac Multi-Surface Concentrate, and Shark HydroVac. Disinfectant, please visit sharkclean.com or scan the QR code here.



NOTE: If 3-in-1 Cleaner still does not operate properly, contact Customer Service at +44 (0)800 862 0453 or www.sharkclean.co.uk

THREE (3) YEAR LIMITED GUARANTEE

When a consumer buys a product in the UK, they get the benefit of legal rights relating to the quality of the product (your "statutory rights"). You can enforce these rights against your retailer. However, at Shark® we are so confident about the quality of our products that we give you an additional manufacturer's warranty of up to three years (one year as standard, plus a further two years upon registration with Shark®). Offer valid only in United Kingdom and Republic of Ireland. These terms and conditions relate to our manufacturer's guarantee only - your statutory rights are unaffected.

The conditions below describe the prerequisites and scope of our guarantee.

Shark® Guarantees

A household appliance like a vacuum cleaner constitutes a sizeable investment. Your new machine needs to work properly for as long as possible. The guarantee it comes with is an important consideration - and reflects how much confidence the manufacturer has in its product and manufacturing quality.

Every Shark® machine comes with a free parts and labour guarantee. Our customer service helpline (0800 862 0453) is open from 9.00am to 6.00pm Monday - Friday. It's free to call, and you'll be put straight through to a Shark® representative. You'll also find online support at sharkclean.co.uk.

How do I register my extended Shark® guarantee?

If you have purchased your vacuum directly from sharkclean.co.uk your guarantee is registered automatically. You can also register your guarantee at sharkclean.co.uk within 28 days of purchase. To save time, you'll need the following information about your machine:

- Date you purchased the machine (receipt or delivery note)
- Model Number

IMPORTANT

- Your guarantee will only cover your product from the date of purchase.
- Please keep your receipt at all times. Should you need to use your guarantee we will need your receipt to verify the information you have supplied to us is correct. The inability to produce a valid receipt may invalidate your ability to claim against your guarantee.

What are the benefits of registering my free Shark® guarantee?

When you register your guarantee we'll have your details to hand if we ever need to get in touch. You can also receive tips and advice on how to get the best out of your Shark® vacuum and hear the latest news about new Shark® technology and launches.

If you register your guarantee online, you'll get instant confirmation that we've received your details.

How long are new Shark® machines guaranteed for?

Our confidence in our design and quality control means that your new Shark® vacuum cleaner is guaranteed for a total of up to three years (1 year plus an extended guarantee of 2 years on registration).

What is covered by the free Shark® guarantee?

At Shark's discretion repair or replacement of your Shark® machine, including all parts and labour. A Shark® guarantee is in addition to your legal rights as a consumer.

What is not covered by the free Shark® guarantee?

- Blockages - for details of how to unblock your 3-in-1 vacuum cleaner, please refer to the Instruction Booklet.
- Normal wear and tear such as brush bar, fuse, belt etc.
- Accidental damage, faults caused by negligent use or care, misuse, neglect, careless operation or handling of the vacuum cleaner which is not in accordance with the Shark® Instruction Booklet supplied with your machine.
- Use of the vacuum cleaner for anything other than normal domestic household purposes.
- Use of parts not assembled or installed in accordance with the operating instructions.
- Use of parts and accessories which are not Shark® Genuine Components.
- Faulty installation (except where installed by Shark®).
- Repairs or alterations carried out by parties other than Shark® or its agents.

What happens when my guarantee runs out?

Shark® does not design products to last for a limited time. We do appreciate that there may be a desire for our customers to want to repair their vacuum cleaners after the guarantee has lapsed. In this case please contact our Freephone customer service help line and ask about our out of guarantee program, on 0800 862 0453.


Where can I buy genuine Shark® spares and accessories?

Shark® spares and accessories are developed by the same engineers who developed your Shark® vacuum. You'll find a full range of accessories, spares and replacement parts for all Shark® machines at sharkclean.co.uk Only use Shark® branded filters and accessories. Damage caused by use of non-Shark parts may not be covered by your guarantee.

NOTES

NOTES

REGISTER YOUR PURCHASE

 registeryourshark.com



RECORD THIS INFORMATION

Model Number: _____

Date Code: _____

Date of Purchase: _____
(Keep receipt)

Store of Purchase: _____

TIP: You can find the model on the QR code label on the bottom of the back of the 3-in-1 Cleaner.

All testing on carpet (e.g. per ASTM-F608) shall be conducted in Freshen Mode.

TECHNICAL SPECIFICATIONS

Voltage: 11.1V 

PLEASE READ CAREFULLY AND KEEP FOR FUTURE REFERENCE.

This Owner's Guide is designed to help you keep your Shark Hydrovac 3-in-1 Cleaner running at peak performance.

**UK
CA**



 @sharkcleaninguk

 @sharkcleanuk

 @sharkcleanuk

PLEASE READ CAREFULLY AND KEEP FOR FUTURE REFERENCE.

This Instruction Booklet is designed to help you get a complete understanding of your new Shark HydroVac™ Cordless 3-in-1 Cleaner.

**SharkNinja Europe Limited,
3150 Century Way, Thorpe Park,
Leeds, LS15 8ZB, UK
+44 (0)800 862 0453
www.sharkclean.co.uk**

**SharkNinja Germany GmbH,
Rotfeder-Ring 9, 3rd Floor,
60327 Frankfurt am Main,
Germany
www.sharkclean.eu**

Illustrations may differ from actual product. We are constantly striving to improve our products, therefore the specifications contained herein are subject to change without notice.

SHARK and SHARK HYDROVAC are registered trademarks of SharkNinja Operating LLC.