

Shark **SmoothStyle**

Heated Brush + Smoothing Comb



FOR ALL HAIRKIND

STYLING GUIDE

1 product, 2 ways to use it.

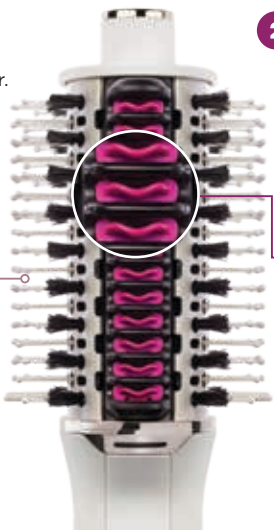
Damp to Dry

1 Wet Hair Mode

Dries and volumises your damp hair using heated air.

Bristles

Combination of nylon bristles and boar bristles for grabbing, smoothing, and shining.



Dry to Styled

2 Dry Hair Mode

Smooths and polishes your dry hair using the **heated smoothing combs**. Use after Wet Hair Mode on wash days, or use alone to refresh hair on non-wash days.

Heated Smoothing Combs

Ceramic-coated plates heat to 215°C to smooth frizz and touch up your dry wash-day or non-wash-day hair.

Note:

Combs are **OFF** in Wet Hair Mode and **ON** in Dry Hair Mode.

Use **Wet Hair Mode** then **switch to Dry Hair Mode** on wash day to smooth your style without the frizz*.

Use **Dry Hair Mode** alone to refresh next-day hair.

*vs. air-drying, based on 600-person survey.

How it works.

Settings

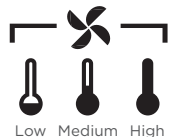
Slide to select your desired mode/air temp.

OFF

Turn off. Let brush cool before handling or storing.

Wet Hair Mode

Select your air temp.



Dry Hair Mode

Heated Smoothing Combs (215°C)

Cool-Touch Tip

Hold onto the tip for more control during styling.

Heated Smoothing Combs Heat Indicator

Illuminates **YELLOW** when heating up, then turns **GREEN** when ready to use in Dry Hair Mode.



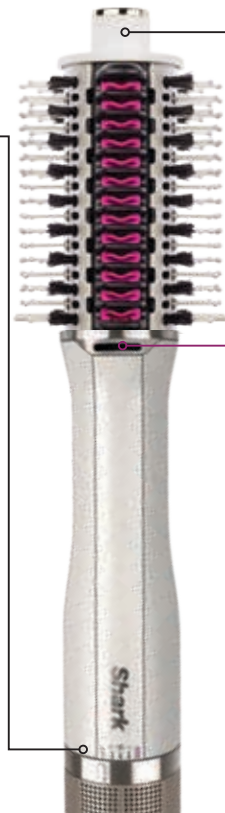
COMBS OFF



COMBS HEATING UP



COMBS READY



Turn up the volume.

Recommended setting: 🔊 High Air Temp

Wet Hair Mode | from *damp* to *dry*



Bristles



Heated Smoothing Combs are **OFF** in Wet Hair Mode.



For more tips on how to create volume and dry your roots, scan the QR code and watch the how-to video.



Begin with **70% dry** hair. **Detangle** hair fully before styling.

Pro Tip: Apply hair products or styling agents as desired.



Section your hair. Place the **bristles under your roots for 3 seconds** for volume and root drying.

Pro Tip: Use smaller sections for faster drying and easier styling.



Roll the brush outward from the roots to the ends to **engage the bristles** and gently grip the hair.

Pro Tip: Hold the **Cool-Touch Tip** for better control when styling and rotating the brush.



Brush upward for volume. Repeat on remaining sections until hair has been dried.

Pro Tip: For even more root volume, flip your hair to one side and brush across your head.

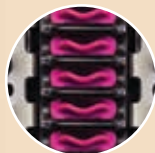
Additional Styling Tips:

- Select the air temperature setting that works best for your hair type and styling preferences.
- For maximum volume at the roots, flip your head upside down and brush from underneath.
- For an added curl, place the brush under the ends of hair and roll the brush toward the roots to engage the bristles. Twist the hair off the brush to release the curl.
- Rotate the brush when you reach your ends to help create shape and movement.

Smooth your style.

Setting:  Dry Hair Mode

Dry Hair Mode | from *dry* to *styled*



Heated Smoothing Combs



Heated Smoothing Combs are **ON** in Dry Hair Mode and are ready to use when light turns green.

For more tips on how to tame frizz and make the most of Dry Hair Mode, scan the QR code and watch the how-to video.



Begin with **100% dry hair**. **Detangle** your hair, then **section** as desired.

Pro Tip: Apply hair products or styling agents for smoothing, such as heat protectant, as desired. Avoid using curl creams and mousse.



Wait until smoothing comb **light is green**. Start styling by placing the **comb under your hair section at the roots**.



Rotate the brush 360° as you brush through to ensure hair passes through **both set of combs**.

Pro Tip: Hold Cool-Touch Tip for better control and brush in an upward direction to help maintain volume at the roots.



Repeat on remaining sections until your hair has been smoothed.

Pro Tip: Use setting or holding spray as desired for an even longer-lasting look.

Additional Styling Tips:

- For maximum volume at the roots, flip your hair to one side and brush the Heated Smoothing Combs across your head. Then flip your head upside down and brush from underneath.
- For added shape at the ends, focus on rolling the brush outward or inward when you reach the ends.
- Hold the Cool-Touch Tip for better control when rotating the brush.

Shark **BEAUTY™**



HT200UK_Series_StyleGuide_MP_230728_MV2

© 2023 Shark Ninja Operating LLC.

FOR ALL HAIRKIND and SHARK BEAUTY are registered trademarks in the United Kingdom of SharkNinja Operating LLC. SMOOTHSTYLE is an unregistered trademark in the United Kingdom of SharkNinja Operating LLC.