

MANUFACTURER'S GUARANTEE

The Shark representative will go through some troubleshooting with you, and if we conclude that the item has failed, we will send you a replacement part or a returns label to send the defective item back to us free of charge. When you have delivered the defective product to us, we will send you a replacement.

Please remember that the item will need to be boxed when you return it to us, which can be any suitable box; it does not have to be the original packaging.

Where can I buy genuine Shark spares and accessories?

Shark spares and accessories are developed by the same engineers who developed your Shark Fan appliance. You'll find a full range of Shark spares, replacement parts and accessories for all Shark machines at www.sharkclean.co.uk. Please remember that damage caused by the use of non-Shark spares may not be covered under your guarantee.

IMPORTANT INFORMATION

REGISTER YOUR PURCHASE

sharkclean.uk/register-guarantee
Scan QR code using mobile device.



TIP:

You can find the model and serial numbers on the QR code located on the back of your unit.

RECORD THIS INFORMATION

Model Number:

Serial Number:

Date of Purchase (Keep receipt):

Store of Purchase:

TECHNICAL SPECIFICATIONS

Voltage: 220-240V 50Hz - 60Hz

Watts: 36W

PLEASE READ CAREFULLY AND KEEP FOR FUTURE REFERENCE.

This Instruction Guide is designed to help you get a complete understanding of your new Shark® Fan.

SharkNinja Europe Limited,
3150 Century Way,
Thorpe Park, Leeds, LS15 8ZB, UK
+44 (0)800 862 0453
www.sharkclean.co.uk

SharkNinja Germany GmbH,
Rotfeder-Ring 9,
60327 Frankfurt am Main,
Germany
www.sharkclean.eu

Illustrations may differ from actual product. We are constantly striving to improve our products; therefore the specifications contained herein are subject to change without notice.

© 2024 SharkNinja Operating LLC. SHARK is a registered trademark in the United Kingdom of SharkNinja Operating LLC.



@sharkhomeUK

IMPORTANT SAFETY INSTRUCTIONS

SUITABLE FOR OUTDOOR USE & HOUSEHOLD USE ONLY.

IPX4 IPX4 RAIN RESISTANT (EXCLUDING THE REMOTE)

⚠ WARNING

TO REDUCE THE RISK OF FIRE, ELECTRIC SHOCK, OR INJURY: READ ALL THESE INSTRUCTIONS BEFORE USE.

- This appliance is operated by a rechargeable battery. ONLY recharge the battery with the charger supplied with the unit, battery charger for use only with model GQ36-120300-ABO power supply Donguan Gangqi Electronic Co., Ltd, or with model AJJ3-1 from Anlian.
A charger that may be suitable for one type of battery may create a risk of fire when used with another battery.
- DO NOT** attempt to destroy, remove, or disassemble the battery pack from the machine. **DO NOT** incinerate battery cells. Consult your local waste authority for information regarding available recycling and/or disposal options.
- This appliance comes with a remote control which contains a coin battery. Dispose of batteries properly. Always keep batteries away from children (choke hazard). Even used batteries can cause injury.
- To reduce the risk of an electric shock, connect only to an outlet provided with a Residual Current Device (RCD).
- The fan should be used on a stable and level surface.
- Never use this fan near pools, bathtubs, showers, basins, or other vessels containing water.
- DO NOT** operate any unit with a damaged power supply wire or battery charger. Discard the unit or return to an authorised third party service facility for examination and/or repair.
- DO NOT** run cord under carpeting. **DO NOT** cover charge cord with throw rugs, runners, or similar coverings. **DO NOT** route charger cord under furniture or appliances. Keep charger cord away from high-traffic areas. Place charger in an area where the cord will not be tripped over.
- If the charger cord is damaged, it should be replaced.
- Before every use, fully flush the hose out for at least one minute before connecting, to prevent stagnant water being misted.
- This appliance is not intended for use by anyone (including children) with reduced physical, sensory, or mental capabilities, or lack of experience and knowledge, unless they have been given supervision or instruction concerning use of the appliance by a person responsible for their safety.
- Children should be supervised to ensure that they **DO NOT** play with the appliance.
- Cleaning and user maintenance shall not be made by children without supervision.
- Prior to cleaning or other maintenance, the appliance must be unplugged from the electrical outlet.
- Only use Shark branded accessories.
- DO NOT** use if appliance is not working as it should, or has been dropped, damaged, left outdoors for extended periods of time in poor weather without the protective cover installed or dropped into water.
- Turn off all controls before plugging in or unplugging the appliance.
- Unplug from electrical outlet when not in use and before any maintenance or cleaning.
- Hand wash exterior/hard plastic/non-electronic parts with water only. **DO NOT** immerse. Cleaning with chemicals could damage the unit.
- DO NOT** attempt to repair or adjust any electrical or mechanical functions of this appliance, as this may cause danger and void the warranty.

⚠ WARNING: Chemical Burn Hazard. Keep batteries away from children.
Dispose of coin cell batteries according to local regulations. Even used batteries can cause injury. This product contains a lithium coin cell battery. If a new or used lithium coin cell battery is swallowed or enters the body, it can cause severe internal burns and can lead to death in as little as 2 hours. After changing batteries, always completely close and secure the battery compartment. If the battery compartment does not close securely, stop using the product, remove the battery, and keep it away from children. If you think a battery might have been swallowed or placed inside any part of the body, seek immediate medical attention.

⚠ WARNING: Not suitable for use with solid-state speed control or a variable control switch.

LITHIUM BATTERY SAFETY WARNINGS ⚠ ⚠
LITHIUM BATTERIES STORE A LARGE AMOUNT OF ENERGY AND WILL VENT FIRE OR EXPLODE IF MISTREATED.

- DO NOT** DO ANY OF THE FOLLOWING TO THE BATTERY PACK:
 - Open
 - Drop
 - Short-circuit
 - Puncture
 - Incinerate
 - Expose to temperatures below 0°C and above 60°C
- Keep battery pack dry.
- Charge battery pack only according to its charger's instructions.
- Inspect battery pack before every use:
DO NOT use or charge if damaged.

BATTERY REMOVAL AND DISPOSAL

This product contains an integral lithium battery (not replaceable), and the remote control uses a lithium coin battery. When the remote battery no longer has a charge, it should be removed from the remote and recycled. **DO NOT** incinerate or compost the product with its integral battery or the remote battery. When your remote battery needs to be replaced, dispose of it or recycle it in accordance with local ordinances or regulations. In some areas, it is illegal to place spent lithium batteries in the rubbish bin or in a municipal solid waste stream. Return spent battery to an authorised recycling centre or to retailer for recycling. Contact your local recycling centre for information on where to drop off the spent battery.

POWER SUPPLY SAFETY

- Read and follow all instructions that are on the product or provided with the product.
- DO NOT** use an extension cord.
- DO NOT** use within 3 metres of pool and **DO NOT** use in a bathroom.
- WARNING:** Risk of Electric Shock. When used outdoors, install only to a covered Class A RCD protected receptacle that is weatherproof with the power unit connected to the receptacle. If one is not provided, contact a qualified electrician for proper installation. Ensure that the power unit and cord **DO NOT** interfere with closing the receptacle cover.

visit qr.sharkclean.com/FA220UK or

SCAN HERE
USING YOUR SMARTPHONE CAMERA



FOR FULL INSTRUCTIONS OR TO PURCHASE ACCESSORIES.

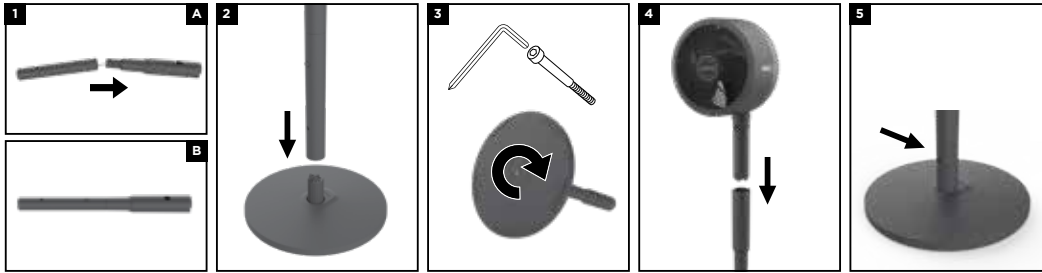
READ AND SAVE THESE INSTRUCTIONS

©2024 SharkNinja Operating LLC. SHARK is a registered trademark in the United Kingdom of SHARKNINJA Operating LLC.
FA220UK_QSG_MP_240328_Mv1

QUICK START GUIDE



SETTING UP YOUR FAN



- Align and insert the **Upper Pole** into the **Lower Pole** until it clicks into place.
- Align the yellow dot on the assembled pole with the yellow dot on the **BASE**, slide the pole down onto the base.
- Insert the **BOLT** in the bottom of the **BASE** and twist the **HEX KEY** clockwise to fasten it to the assembled pole.
- CAUTION:** finger pinch risk. Insert the fan post into the top of the **ASSEMBLED POLE** until it clicks into place.
- Charge fan to 100% battery before use without the cord. **FIRST USE:** before using remote control, press **POWER BUTTON** on fan.

FEATURES

CORDLESS	OUTDOORS	LIFT-AWAY	BREEZE MODES	OSCILLATION	TIMER	REMOTE
This is a 2 in 1 fan that can be used with or without the cord.	This fan is water resistant (IPX4) and can be enjoyed indoors or outdoors.	Press the lift away button and lift the handle to convert the fan from pedestal to tabletop mode.	Activate the breeze modes for a varying airflow that mimics nature.	Select the angle of oscillation to best suit your needs.	Set the timer to turn off the fan automatically.	Store the remote on the back of the fan head when it is not in use.

HOW TO USE YOUR FAN

Fan Speeds	1-5	Press to switch between fan speeds 1-5. LED lights will appear to indicate the fan speed level.
	Strong Breeze Mode 	(REMOTE ONLY) Press and hold for 3 seconds for strong breeze mode.
	Gentle Breeze Mode 	(REMOTE ONLY) Press and hold for 3 seconds for gentle breeze mode.
Oscillation Settings	1 - 45° angle	2 - 90° angle
	3 - 180° angle	Press to toggle between oscillation angles. LED lights will indicate which angle is selected. (REMOTE ONLY) Press the on the remote to move the fan head to the left or right.
Timer	Setting 1 : 1 Hour Setting 2 : 2 Hours Setting 3 : 3 Hours Setting 4 : 4 Hours Setting 5 : 5 Hours	(REMOTE ONLY) Press to switch between timer settings 1-5 hours. LED lights will appear to indicate how many hours the timer is set for. LEDs will switch off after 20 seconds. To check how long is left on your timer, press and the LED lights will appear.
	Runtime without oscillation	MAXIMUM CORDLESS RUNTIME: Up to 24 hours on fan speed 1. MAXIMUM CORDLESS PERFORMANCE: Up to 2 hours on fan speed 5. PLUGGED IN: Indefinite runtime; fan will charge while operating.
Charge Time	FROM 0% TO FULLY 100% BATTERY: 5 hours	
Battery Indicator	100% charged: white light 51%-99%: green light 21%-50%: amber light 6%-20%: red light steady 5% and below: red light blinking	TIP: The fan works while charging
	<p>FOR MORE INFORMATION</p> <p>visit qr.sharkclean.com/FA220UK or</p> <p>SCAN HERE</p> <p>USING YOUR SMARTPHONE CAMERA</p> <p>FOR FULL INSTRUCTIONS OR TO PURCHASE ACCESSORIES.</p>	

MANUFACTURER'S GUARANTEE

When a consumer buys a product in the country of purchase, they get the benefit of legal rights relating to the quality of the product (your "legal rights"). You can enforce your legal rights against your retailer, including Shark if you bought your Shark appliance from sharkclean.co.uk. However, at Shark we are so confident about the quality of our products that we give the owner an additional, free parts and labour manufacturer's guarantee of up to 2 years.

A household appliance like a Shark Fan appliance constitutes a sizeable investment. Your new machine needs to work properly for as long as possible. The guarantee it comes with is an important consideration - and reflects how much confidence the manufacturer has in its product and manufacturing quality.

The manufacturer's guarantee does not affect your legal rights.

How long are new Shark machines guaranteed for?

Our manufacturer's guarantee lasts for one year from the date of purchase as standard, or for two years if you register your purchase with us within 28 days. There is information on how to register below.

How do I register my Shark guarantee?

If you have purchased your Shark Fan appliance directly from sharkclean.co.uk your guarantee is registered automatically. If you bought it from anywhere else, you can register your guarantee online within 28 days of purchase.

- To register online, please visit www.sharkclean.co.uk/register-guarantee or scan the QR code in your instruction manual.
- Keep a note of the date you purchased the machine.

IMPORTANT:

- Keep your receipt** if you bought your Shark Fan appliance from anywhere except sharkclean.co.uk. You will need it to claim under your guarantee.
- The free Shark guarantee only applies to Shark owners living permanently in the UK.

What are the benefits of registering my free Shark guarantee?

When you register your guarantee, you will get an extra year of cover. We'll also have your details to hand if we ever need to get in touch. If you further agree to receive communications from us, you can also receive tips and advice on how to get the best out of your Shark Fan appliance and hear the latest news about new Shark technology and launches.

What is covered by the free Shark guarantee?

Repair or replacement (at Shark's option) of your Shark machine, including all parts and labour.

What is not covered by the free Shark guarantee?

- Normal wear and tear.
- Accidental damage or faults caused by negligent use or care, misuse, neglect, careless operation or handling of the Shark appliance which is not in accordance with the Shark Operating Manual supplied with your machine.
- Damage caused by use of the Shark appliance for anything other than normal domestic household purposes.
- Damage caused by use of parts not assembled or installed in accordance with the operating instructions.
- Damage caused by use of parts and accessories which are not Shark Genuine Components
- Faulty installation (except where installed by Shark).
- Repairs or alterations carried out by parties other than Shark or its agents.

How can I claim under the free Shark guarantee?

Contact our customer service helpline on 0800 862 0453. For service hours please visit our website under 'Contact Us'. It's free to call, and you'll be put straight through to a Shark representative. You'll also find online support at <https://support.sharkclean.co.uk/>.