

# ***Shark***

## **FlexBreeze Pro Mist Fan FA300UK Series**

### **OWNER'S GUIDE**

---



# IMPORTANT SAFETY INSTRUCTIONS

FAN IS SUITABLE FOR OUTDOOR & HOUSEHOLD USE ONLY. THE MISTING FEATURE IS SUITABLE FOR OUTDOOR USE ONLY.

**NOTE:** Before every use, empty and rinse the hose and water tank to prevent stagnant water from being misted.



IPX5 RAIN RESISTANT (EXCLUDING REMOTE).

## WARNING

**TO REDUCE THE RISK OF FIRE, ELECTRIC SHOCK, OR INJURY: READ ALL THESE INSTRUCTIONS BEFORE USE. MISTING FUNCTION IS FOR OUTDOOR USE ONLY.**



**WARNING: SLIPPERY SURFACE. IMPROPER USE AND/OR LEAKS CAN RESULT IN A SLIPPERY SURFACE AND A FALL HAZARD.**

1. This appliance is operated by a rechargeable battery. ONLY recharge the battery with the charger supplied with the unit, battery charger for use only with model GQ36-120300-ABO power supply from Dongguan Gangqi Electronics Co., Ltd. or with model AJJ3-1 from Anlian. A charger that may be suitable for one type of battery may create a risk of fire when used with another battery.
2. **Do not** attempt to destroy, remove, or disassemble the battery pack from the machine. **Do not** incinerate battery cells. Consult your local waste authority for information regarding available recycling and/or disposal options.
3. To reduce the risk of an electric shock, connect only to an outlet provided with a Residual Current Device (RCD).
4. The fan should be used on a stable and level surface.
5. Never use this fan near pools, bathtubs, showers, basins, or other vessels containing water.
6. **Do not** operate any unit with a damaged power supply wire or battery charger. Discard the unit or return to an authorised service facility for examination and/or repair.
7. **Do not** run cord under carpeting. **Do not** cover charge cord with throw rugs, runners, or similar coverings. **Do not** route charger cord under furniture or appliances. Keep charger cord away from high-traffic areas. Place charger in an area where the cord will not be tripped over.
8. If the charger cord is damaged, it should be replaced.
9. This appliance is not intended for use by anyone (including children) with reduced physical, sensory, or mental capabilities, or lack of experience and knowledge, unless they have been given supervision or instruction concerning use of the appliance by a person responsible for their safety.
10. Children should be supervised to ensure that they **do not** play with the appliance.
11. Cleaning and user maintenance shall not be made by children without supervision.
12. Prior to cleaning or other maintenance, the appliance must be unplugged from the electrical outlet.
13. Only use Shark branded accessories.
14. **Do not** use if appliance is not working as it should, or has been dropped, damaged, left outdoors for extended periods of time in poor weather without the protective cover applied or dropped into water.
15. Turn off all controls before plugging in or unplugging the appliance.
16. Unplug from electrical outlet when not in use and before any maintenance or cleaning.
17. Hand wash exterior/hard plastic/non-electronic parts with water only. **Do not** immerse. Cleaning with chemicals could damage the unit.
18. **Do not** attempt to repair or adjust any electrical or mechanical functions of this appliance, as this may cause danger and void the warranty.
19. Remove and immediately recycle or dispose of used batteries according to local regulations and keep away from children. **Do not** dispose of batteries in household waste or incinerate.
20. Even used batteries may cause severe injury or death.
21. Call a local poison control center for treatment information.
22. Non-rechargeable batteries are not to be recharged.
23. **Do not** force discharge, recharge, disassemble, heat above 60°C (140°F), or incinerate. Doing so may result in injury due to venting, leakage, or explosion resulting in chemical burns.
24. Ensure the batteries are installed correctly according to polarity (+ and -).
25. **Do not** mix old and new batteries, different brands or types of batteries, such as alkaline, carbon-zinc, or rechargeable batteries.
26. Remove and immediately recycle or dispose of batteries from equipment not used for an extended period of time according to local regulations.
27. Always completely secure the battery compartment. If the battery compartment does not close securely, stop using the product, remove the batteries, and keep them away from children.
28. The misting function is suitable for OUTDOOR USE ONLY.
29. **Do not** use warm or hot water. Only use cold or room temperature water. Never attempt to mist substances other than filtered or clean tap water.
30. **Do not** handle live electrical products while in range of the misting stream.
31. Keep non-waterproof electronic equipment and appliances out of the misting stream.

32. **WARNING: CHOKING HAZARD.** Always keep nozzles and any other small parts out of the reach of children.
33. **Do not** apply any fragrance or scented products onto any part of the fan during use or maintenance.
34. Always follow the warning information on the batteries and in the manuals of devices.
35. Only use the recommended battery types.
36. Keep batteries away from children.
37. Unpacked batteries shall not lie about in bulk.
38. In case of battery change always replace all batteries with new ones of identical type and brand.
39. **Do not** swallow batteries.
40. **Do not** throw batteries into water.
41. **Do not** throw batteries into fire.
42. Avoid deep discharge.
43. **Do not** short-circuit batteries.
44. Use recommended charging time and current.
45. **Do not** open or disassemble batteries.
46. **Do not** expose the remote to long periods of rain or moisture.
47. **Do not** direct mist toward electrical wiring or devices.

### COIN CELL BATTERY REMOTE MODELS

1. This appliance comes with a remote control which is suitable for a coin cell battery. Dispose of batteries properly. Always keep batteries away from children (choke hazard). Even used batteries can cause injury.
2. Compatible battery type is CR2025.
3. The nominal battery voltage is 3V.

### AAA BATTERY REMOTE MODELS

1. This appliance comes with a remote control which is suitable for a coin cell battery. Dispose of batteries properly. Always keep batteries away from children (choke hazard). Even used batteries can cause injury.
2. Compatible battery type is CR2025.
3. The nominal battery voltage is 3V.



**WARNING: Not suitable for use with solid-state speed controls.**

### LITHIUM BATTERY SAFETY WARNINGS

LITHIUM BATTERIES STORE A LARGE AMOUNT OF ENERGY AND WILL VENT FIRE OR EXPLODE IF MISTREATED.

1. **DO NOT** DO ANY OF THE FOLLOWING TO THE BATTERY PACK:
  - a. Open
  - b. Drop
  - c. Short-circuit
  - d. Puncture
  - e. Incinerate
  - f. Expose to temperatures below 0°C and above 60°C
2. Keep battery pack dry.
3. Charge battery pack only according to its charger's instructions.
4. Inspect battery pack before every use: **do not** use or charge if damaged.

### BATTERY REMOVAL AND DISPOSAL

This product contains an integral lithium battery (not replaceable), and the remote control uses a lithium coin battery (replaceable) or 2x AAA battery (replaceable). When the remote batteries no longer have charge, it should be removed from the remote and recycled. **DO NOT** incinerate or compost the product with its integral battery or the remote batteries. When your remote battery needs to be replaced, dispose of it or recycle it in accordance with local ordinances or regulations. In some areas, it is illegal to place spent lithium batteries in the rubbish or in a municipal solid waste stream. Return spent batteries to an authorised recycling center or to retailer for recycling. Contact your local recycling center for information on where to drop off the spent battery.

### POWER SUPPLY SAFETY

1. Read and follow all instructions that are on the product or provided with the product.
2. **Do not** use an extension cord.
3. **Do not** use within 3 meters of a pool or other bodies of water and **do not** use in a bathroom.
4. **WARNING: Risk of Electric Shock.** When used outdoors, install only to a covered Class A GFCI protected receptacle that is weatherproof with the power unit connected to the receptacle. If one is not provided, contact a qualified electrician for proper installation. Ensure that the power unit and cord **do not** interfere with closing the receptacle cover.

## READ AND SAVE THESE INSTRUCTIONS

## COIN CELL BATTERY REMOTE MODELS

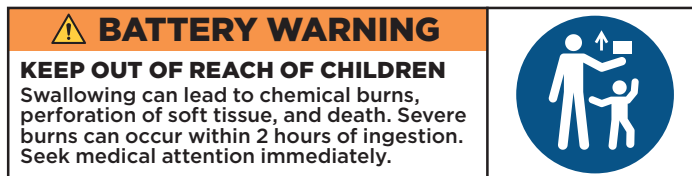
### SYMPTOMS FROM BATTERY INGESTION

#### No obvious symptoms

Unfortunately, it is not obvious when a button or coin battery is stuck in a child's oesophagus (food pipe). There are no specific symptoms associated with this. The child might:

- Cough, gag or drool a lot;
- Appear to have a stomach upset or a virus;
- Be sick;
- Point to their throat or stomach;
- Have a pain in their abdomen, chest or throat;
- Be tired or lethargic;
- Be quieter or more clingy than usual or otherwise "not themselves";
- Lose their appetite or have a reduced appetite; and
- Not want to eat solid food / be unable to eat solid food.

These sorts of symptoms vary or fluctuate, with the pain increasing and then subsiding. A specific symptom to button and coin battery ingestion is vomiting fresh (bright red) blood. If the child does this seek immediate medical help. The lack of clear symptoms is why it is important to be vigilant with "flat" or spare button or coin batteries in the home and the products that contain them.



## Shark FA300UK Series Product Information

According to:

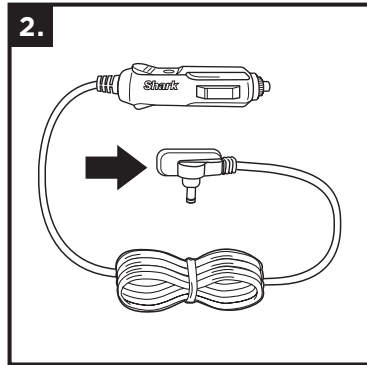
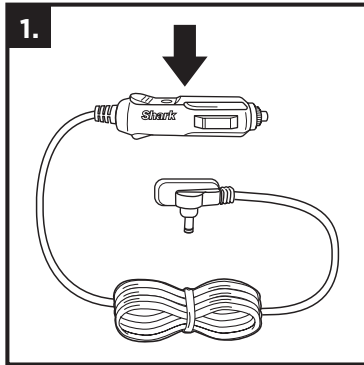
Commission Regulation (EU) 206/2012 implementing Directive 2009/125/EC of the European Parliament and of the Council with regard to eco-design requirements for air conditioners and comfort fans.

NOTE	DESCRIPTION	SYMBOL	VALUE	UNIT
	Maximum Fan Flow Rate	F	26.02	m <sup>3</sup> /min
	Fan Power Input	P	22.28	W
	Service Value	SV	1.17	(m <sup>3</sup> /min)/W
	Standby Power Consumption	$P_{SB}$	0.38	W
Table	Fan Sound Power Level	$L_{WA}$	58.8	dB(A)
Floor	Fan Sound Power Level	$L_{WA}$	57.3	dB(A)
	Maximum Air Velocity	c	3.0	m/s
	Measurement standard for service value	IEC 60879		

Table	Fan Sound Power Level (Misting)	$L_{WA}$	59.4	dB(A)
Floor	Fan Sound Power Level (Misting)	$L_{WA}$	57.4	dB(A)

## INSTRUCTIONS FOR USE:

1. Firmly insert the car charger plug into a 12-volt outlet in your vehicle.
2. Connect the small end of the car charger to the charging port on the underside of the fan head, between the 4 support legs.



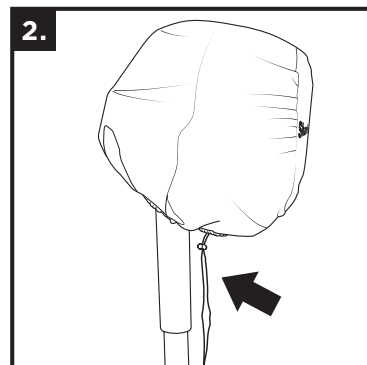
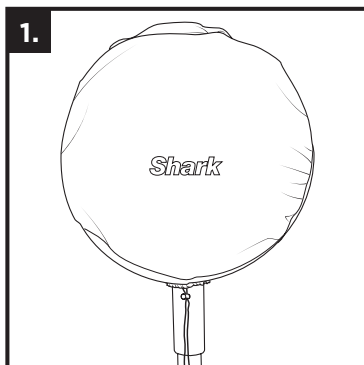
## ⚠ IMPORTANT SAFETY INSTRUCTIONS

READ ALL INSTRUCTIONS BEFORE USE

1. **SAVE THESE INSTRUCTIONS.** This manual contains important safety and operating instructions for battery charger model FA20XCARUKEU from Dongguan City Gangqi Electronics Co., Ltd.
2. Before using this battery charger, read all instructions and cautionary markings on the battery charger, battery, and product using battery.
3. **CAUTION:** To reduce risk of injury, charge only the provided rechargeable battery. Other types of batteries may burst, causing injury to persons and damage.
4. **Do not** expose charger to rain, moisture, or snow.
5. Use of an attachment not recommended or sold by the battery charger manufacturer may result in a risk of fire, electric shock, or injury to persons.
6. To reduce risk of damage to cigarette lighter connector and cord, pull by cigarette lighter connector rather than cord when disconnecting charger.
7. To reduce risk of electric shock, unplug charger before attempting any maintenance or cleaning. Turning off controls will not reduce this risk.
8. **Do not** operate charger with damaged cord or cigarette lighter connector. Replace it immediately.
9. The car charger may be wiped clean with water once removed from the power socket. Allow car charger to fully dry prior to use.
10. The car charger contains a 5-amp replaceable fuse. Only replace the fuse with a 5-amp fuse, no higher. To do this, unscrew the chrome tip at the top end of the car charger connector to gain access.

**READ AND SAVE THESE INSTRUCTIONS**

## FAN COVER



## INSTRUCTIONS FOR USE:

1. Position the cover over fan head, then slide it on until the fan is completely covered.
2. Cinch the drawstring on the bottom of the cover to secure it in place.
3. The cover will protect the fan from dust and damage from light. The fan cover does not guarantee that the product can be left outdoors for an extended time.

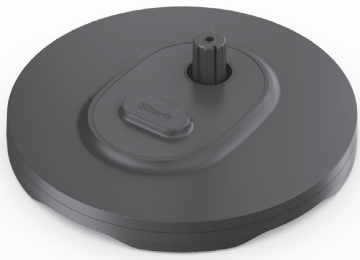
## ⚠ IMPORTANT SAFETY INSTRUCTIONS

READ ALL INSTRUCTIONS BEFORE USE

1. **WARNING: CHOKING HAZARD.** The fan cover is not a toy. Always keep small parts out of reach of children.
2. Children should be supervised to ensure that they **DO NOT** play with the fan cover as it may become unsanitary during outdoor use.



**WHAT'S INCLUDED**



**Base**



**Fan Head**  
(already assembled)



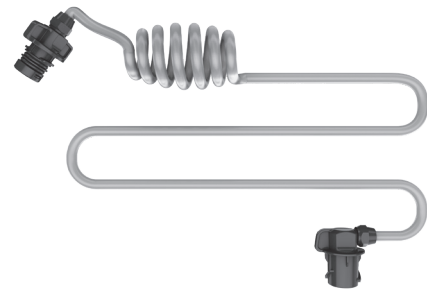
**Water Tank**



**Pole**



**Fan Cover**



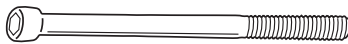
**Misting Hose**



**Remote**



**Hex Key**



**Bolt**

**Note:** Images enlarged for clarity.



**Charger**  
(reference image only)

**ACCESSORIES AVAILABLE FOR PURCHASE**

Different fan models come with different accessories. To purchase an accessory that was not included, go to [sharkclean.co.uk](http://sharkclean.co.uk).



**Car Charger**



**Fan Cover**



**Travel Bag**



**Base Cover**



**Garden Hose  
Adapter**



**Travel Tank**



**Bucket Filter  
Adapter**

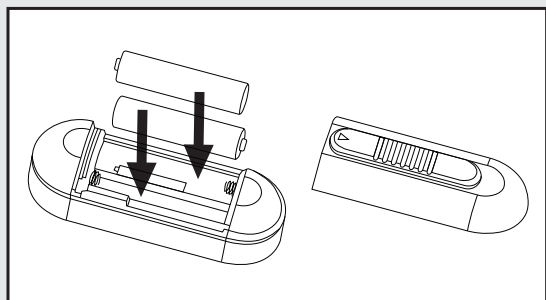
## SETTING UP YOUR REMOTE

### COIN CELL BATTERY REMOTE MODELS

1. Remove the battery saver paper from the remote.

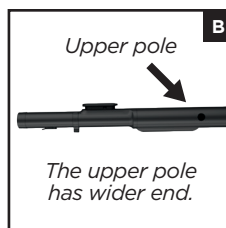
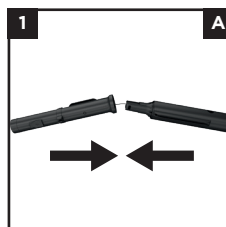
### AAA BATTERY REMOTE MODELS

1. Slide the battery cover off the rear side of the remote.
2. Place the 2x AAA batteries in the remote - ensure that the batteries are placed in the remote with the correct polarity ( + and - ).

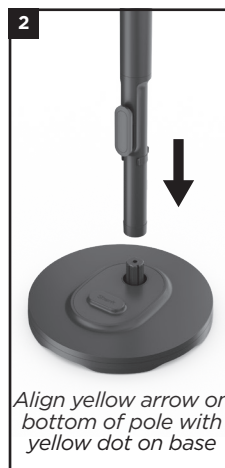


3. Replace the battery cover by sliding it into the remote.

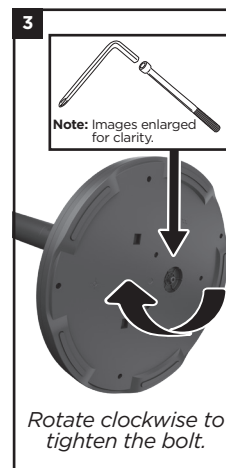
## ASSEMBLING YOUR FAN



1. Align and insert the **Upper Pole** into the **Lower Pole** until it clicks into place.



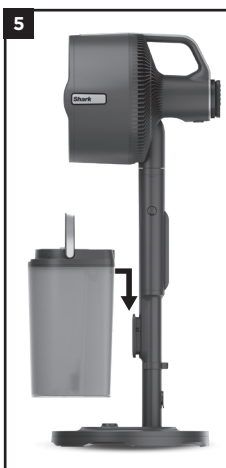
2. Align the yellow dot on the assembled pole with the yellow arrow on the **Base**, then slide the pole down onto the base. Ensure that the pole is fully against the base before proceeding.



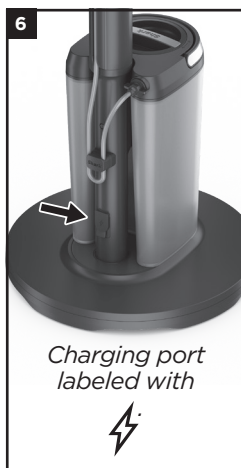
3. Turn the base on its side, then insert the **Bolt** in the bottom of the **Base**. Use the **Hex Key** to turn the Bolt clockwise to fasten it to the assembled pole.



4. **CAUTION:** finger pinch risk. Holding the **Fan Head** by the handle, insert the legs into the top of the assembled pole until they click into place.



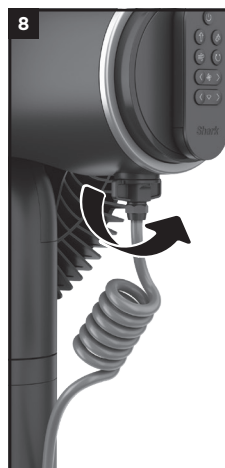
5. Holding the **Water Tank** by the handle, align the rear of the tank against the pole and slide down to latch into place.



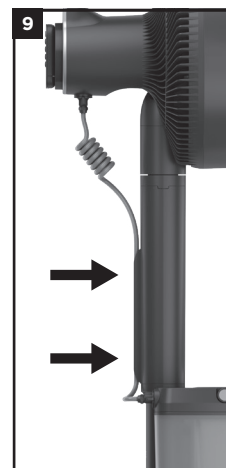
6. **Charge fan to 100% battery power** before use without the cord. **First use:** before using remote control, press **Power Button** on fan. Fan is operable while charging.



7. Connect the **Misting Hose** to the back of the Water Tank and rotate clockwise to lock it in place.



8. Connect the other end of the **Misting Hose** to the back of the **Fan Head** and rotate anti-clockwise to lock it in place.



9. Tuck the rest of the hose into the channel and clamp on the back of the pole.

## CHARGING THE FAN



**PEDESTAL MODE:** To charge the fan in pedestal mode, insert the **CHARGER PLUG** into the charging port near the bottom of the **POLE**.



**TABLETOP MODE:** To charge the fan in tabletop mode, insert the charger into the charging port under the centre shaft of the fan, between the 4 support legs. **DO NOT CHARGE OR USE IN THE RAIN.**



## FEATURES

### CORDLESS

This is a 2-in-1 fan that can be used with or without the cord.

### OUTDOORS

This fan can be enjoyed indoors or outdoors. **DO NOT CHARGE OR USE IN THE RAIN.**

### NATURALBREEZE

Activate one of the NaturalBreeze modes to simulate wind conditions.

### OUTDOOR MISTING

Integrated misting enabled through a portable water tank and 2 misting nozzles and 3 misting modes.

### OSCILLATION & TILT

Direct the airflow by choosing between 3 electronic oscillation angles and manually adjusting the vertical tilt up to 55 degrees.

### REMOTE STORAGE

You can store the remote on the convenient magnetic mount on back of the fan head.

### TIMER

Set the timer to turn off the fan automatically.

The misting feature is suitable for **OUTDOOR USE ONLY.**

## BATTERY LIFE

### BATTERY LIFE - FAN ONLY

Settings	Approx. Runtime (hrs)
Fan Speed 1	24 hours
Fan Speed 1 + Oscillation	10 hours
Fan Speed 2	14 hours
Fan Speed 2 + Oscillation	8 hours
Fan Speed 3	6 hours
Fan Speed 3 + Oscillation	4.5 hours
Fan Speed 4	3 hours
Fan Speed 4 + Oscillation	2.5 hours

Settings	Approx. Runtime (hrs)
Fan Speed 5	2 hours
Fan Speed 5 + Oscillation	1.5 hours
Strong Breeze	3 hours
Strong Breeze + Oscillation	2.5 hours
Gentle Breeze	12 hours
Gentle Breeze + Oscillation	8 hours

### BATTERY LIFE - FAN + MIST

Settings	Approx. Runtime (hrs)
Fan Speed 1	12 hours
Fan Speed 1 + Oscillation	8 hours
Fan Speed 2	8.5 hours
Fan Speed 2 + Oscillation	6 hours
Fan Speed 3	4.5 hours
Fan Speed 3 + Oscillation	4 hours
Fan Speed 4	2.5 hours
Fan Speed 4 + Oscillation	2.5 hours

Settings	Approx. Runtime (hrs)
Fan Speed 5	1.5 hours
Fan Speed 5 + Oscillation	1.5 hours
Strong Breeze	2.5 hours
Strong Breeze + Oscillation	2.5 hours
Gentle Breeze	8 hours
Gentle Breeze + Oscillation	6 hours

## HOW TO USE YOUR FAN

Fan Speeds	Press  on the fan head or   on the remote to switch between fan speeds. LED lights will indicate selected fan speed.	
	NaturalBreeze Modes	To activate STRONG breeze mode, press  once on the REMOTE, or press  on the fan head an additional time.
		To activate GENTLE breeze mode, press  a second time on the REMOTE, or press  on the fan an additional time.
Oscillation Settings	Press  on the fan head or  on the remote to toggle between oscillation settings. LED lights will indicate which setting is selected.	
Timer	 Setting 1 : 1 Hour Setting 2 : 2 Hours Setting 3 : 3 Hours Setting 4 : 4 Hours Setting 5 : 5 Hours	<b>(REMOTE ONLY)</b> Press  to switch between timer settings 1-5 hours. LED lights will appear to indicate how many hours the timer is set for. LEDs will switch off after 20 seconds. To check how long is left on your timer, press  and the LED lights will appear.
Horizontal Angle Adjust	Press the   on the remote to change the horizontal angle of the fan in 18° increments.	
Outdoor Misting Settings	1-3	Press  once to turn on high-pressure consistent mist. Press  a second time to switch to the low-pressure consistent mist mode. Press  a third time to switch to the interval mist mode.
Runtime	Fan ONLY No Oscillation	<b>MAXIMUM CORDLESS RUNTIME:</b> 24 hours (approximate) on fan speed 1. <b>MAXIMUM CORDLESS RUNTIME:</b> 6 hours (approximate) on fan speed 3. <b>MAXIMUM CORDLESS PERFORMANCE:</b> 2 hours (approximate) on fan speed 5. <b>PLUGGED IN:</b> Indefinite runtime; fan will charge while operating.
	Fan + Outdoor Misting	<b>MAXIMUM MISTING PERFORMANCE:</b> 1 hour (approximate) per tank with consistent misting on fan speed 5
Charge Time	<b>FROM 0% TO FULLY CHARGED BATTERY:</b> 5 to 6 hours	
Battery Indicator	70%-100%: green light 30%-69%: amber light 6%-29%: red light steady 5% and below: red light blinking	



To preserve battery life, the fan will enter IDLE mode if left unplugged and powered off for 24 hours. In IDLE mode, the remote cannot be used to turn on the fan. To turn off IDLE mode, press the power button on top of the fan head.

**DO NOT CHARGE OR USE IN THE RAIN**

Before every use, fully flush the hose out for at least one minute before connecting and rinse out the tank, to prevent stagnant water being misted.

## VERTICAL TILT

To adjust the vertical height of the fan head, use the handle to manually tilt the head up or down. The fan has a vertical range of 55° degrees.



Fan head tilted UP



Fan head tilted DOWN

## HOW TO CARRY YOUR FAN

- For short distances, carry the entire fan by placing one hand on the handle and the other on the pole. **Note:** If the water tank is full, remove it before carrying the fan to avoid potential injury or accidental damage.
- For longer distances, disassemble the fan. Carry the fan head in tabletop mode separately from the base, pole, and empty water tank. **Note:** Ensure you remove the misting hose from the back of the fan head before converting the fan to tabletop mode to prevent accidental damage.

## TABLETOP MODE

To convert the fan to portable, tabletop mode:



To detach the fan from the pole, press the Lift-Away button, then slide the fan head off the pole.



Spread out the four support legs until they are fully extended, then place the fan head on a flat, level surface to use.



Connect the hose to the tank and fan head while in tabletop mode for misting on the go.

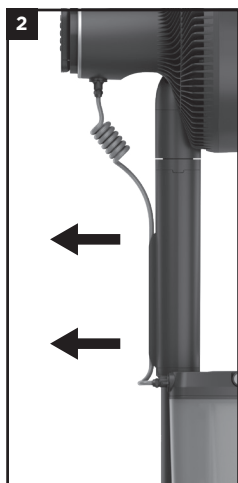
**Note:** To avoid accidental damage to your fan, ensure the misting hose is disconnected from the back of the fan head before converting to tabletop mode.



## DISASSEMBLY



1. Ensure your fan is unplugged before disassembly. To avoid accidental damage, **DO NOT** remove the charger at an angle.



2. Gently remove the **Misting Hose** from the channel located on the back of the **Pole**.



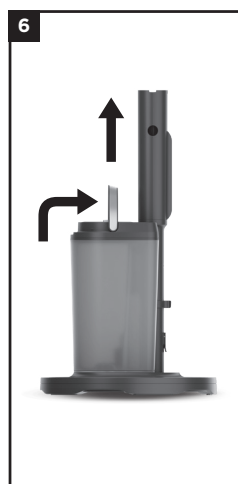
3. To detach the misting hose from the **Fan Head**, rotate the connector clockwise.



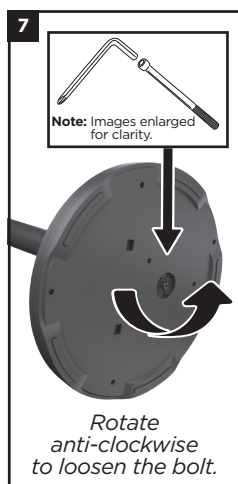
4. To detach the other end of the misting hose from the **Water Tank**, rotate the connector anti-clockwise.



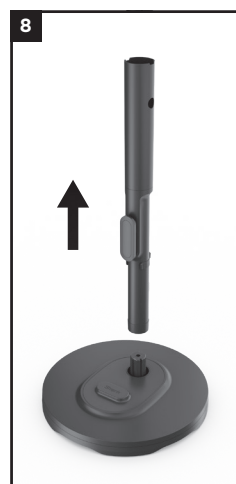
5. With the misting hose fully removed, press the Lift-Away button on the side of the pole, then lift the **Fan Head** off the pole.



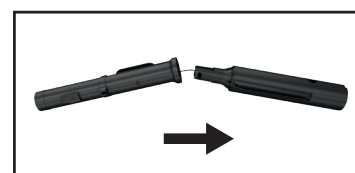
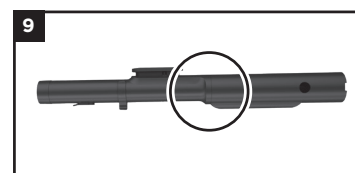
6. Using the handle located on the lid, carefully lift the **Water Tank** to remove it from the base.



7. Turn the pedestal **Base** on its side to access the **Bolt** on the bottom. Use the included **Allen Wrench** to rotate the bolt anti-clockwise, then remove the bolt.



8. Carefully lift the pole to remove it from the base.



9. Press the small button on the **Lower Pole** to detach the poles. Carefully fold as needed for storage. **DO NOT** strain the cord.

If grille screw, bolt, or hex key have been lost, see Hardware Specs section for information on how to replace any hardware.

## STORAGE

STORAGE TYPE	INSTRUCTIONS
<b>Short-term storage indoors (less than 24 hours)</b>	<p>Remove, empty, and dry the misting hose and water tank. With the misting hose and tank disconnected from the fan, run the misting system for one minute to clear out any stagnant water remaining in the internal hose. Rinse the tank and dry before storing.</p> <p>Carefully place the fan in the desired storage location. Ensure it is out of reach of children and pets. Bring the fan indoors if inclement weather is predicted.</p>
<b>Long-term storage indoors (more than 24 hours)</b>	<p>Remove, empty, and dry the misting hose and water tank. With the misting hose and tank disconnected from the fan, run the misting system for one minute to clear out any stagnant water remaining in the internal hose. Rinse the tank and dry before storing.</p> <p>Carefully place the fan in the desired storage location. Store the fan indoors when not in use for long periods. Always make sure to keep the fan out of reach of children and pets.</p>



## SETTINGS

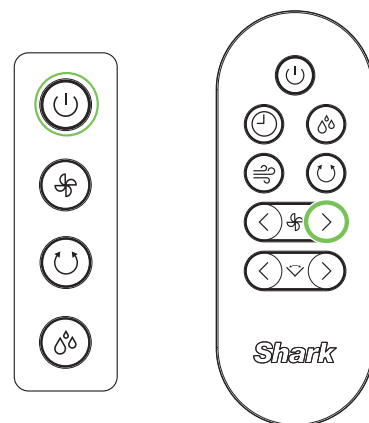
- To preserve battery life, the fan will enter IDLE mode if left unplugged and powered off for 24 hours. In IDLE mode, the remote cannot be used to turn on the fan. To turn off IDLE mode and turn on the power, press the power button on top of the fan head.
- The LED lights on the fan head display will only remain illuminated for 20 seconds after a setting adjustment is made before turning off to save battery.
- For information on how to activate or deactivate **LOCK MODE** for fan maintenance, please see the Maintenance section.
- Remote may be less effective when used outdoors.

## REMOTE PAIRING INSTRUCTIONS

Turn the unit on by pressing the power button on top of the fan head and check if the remote functions properly.

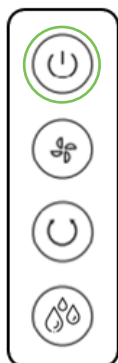
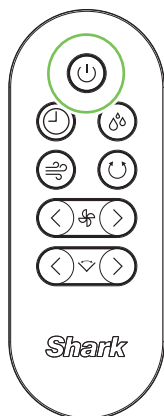
If the remote is not functioning, try the following:

1. Check to ensure the battery saver paper is removed from the remote (coin cell battery remote models). Check to ensure the 2x AAA batteries are placed in the remote in the correct orientation (AAA battery remote models).
2. Try connecting the remote to the fan by pressing and holding the power button on the fan head for 5 seconds. While the LEDs are flashing, press the fan speed up button on the remote.
3. If the remote still doesn't work, then try replacing the batteries in the remote and repeat the connection process above.



## POWER ON/OFF

To turn the fan on or off, press the **POWER** button on the remote or the **POWER** button on the fan head.

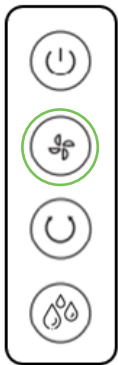
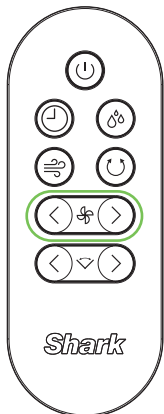







POWER	DISPLAY
ON	<p>LED animations will play once (LEDs will turn on from left to right, then turn off from right to left)</p>
OFF	<p>LED animation will play once (LEDs will turn off from right to left)</p>

## FAN SPEEDS

Changing the **FAN SPEED** will increase or decrease the airflow of the fan.



To change the speed, press  on the fan head to cycle through the different speeds. With the **REMOTE**, press the left and right arrows to change speeds. The **LEFT ARROW** will **DECREASE** the speed of the fan and the **RIGHT ARROW** will **INCREASE** the speed of the fan.

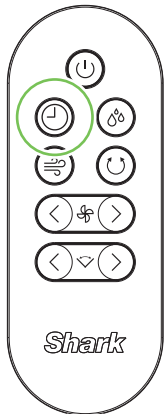







SETTING	DISPLAY	BEST FOR
1		Quiet operation
2		Moderate cooling
3		Balance of noise level and fan power
4		Air circulation
5		High power cooling

## TIMER

If you don't want to leave your fan constantly on, but don't want to think about it, use the timer setting (**remote only**). You can choose between timer settings 1-5 hours.

To activate timer, press  on your remote. LED lights will appear and blink to indicate how many hours the timer is set for. LEDs will switch off after 20 seconds. To check how long is left on your timer, press  and the LED lights will appear.







SETTING	DISPLAY	BEST FOR
1		1 Hours
2		2 Hours
3		3 Hours
4		4 Hours
5		5 Hours

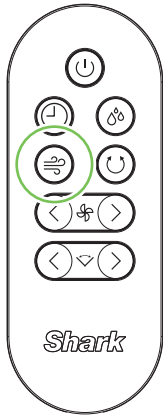
## NATURALBREEZE MODES



Turn on either of the NaturalBreeze modes to simulate natural wind conditions.

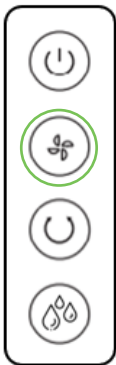
To activate STRONG NaturalBreeze, press the  icon on the **REMOTE** or press the  icon on the fan head until the corresponding LEDs are displayed on the unit (see table below for LED patterns).

To transition from STRONG NaturalBreeze to GENTLE NaturalBreeze press the  icon on the **REMOTE** again, or press the  icon on the fan head again.

To deactivate NaturalBreeze, press the  icon on the **REMOTE** to return to your previously selected fan speed or press the  icon on the fan head until you reach your desired fan speed setting.



DISPLAY	SETTING	BEST FOR
	STRONG NaturalBreeze	Simulating strong wind conditions
	GENTLE NaturalBreeze	Simulating gentle wind conditions




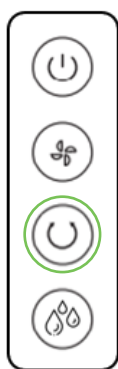
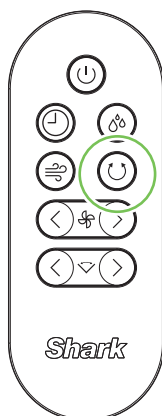
NATURALBREEZE WIND PATTERNS	
STRONG NaturalBreeze Mode	GENTLE NaturalBreeze Mode
<ul style="list-style-type: none"> <li>• 6 seconds in Speed 3</li> <li>• 5 seconds in Speed 4</li> <li>• 4 seconds in Speed 5</li> <li>• 5 seconds in Speed 4</li> <li>• The sequence will repeat</li> </ul>	<ul style="list-style-type: none"> <li>• 6 seconds in Speed 1</li> <li>• 5 seconds in Speed 2</li> <li>• 4 seconds in Speed 3</li> <li>• 5 seconds in Speed 2</li> <li>• The sequence will repeat</li> </ul>




## OSCILLATION

Choose one of the 3 oscillation angles.

To change the oscillation settings, press the Oscillation  icon on the **REMOTE** or the fan head.

To turn off oscillation, press the same Oscillation  icon on the **REMOTE** or the fan head until no LEDs are illuminated.



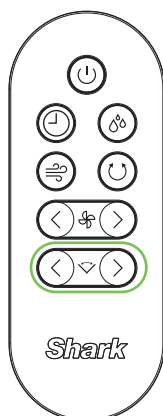
DISPLAY	ANGLE	BEST FOR
	45°	Circulating air in small area, 1-2 people
	90°	Circulating air in moderate area, 3-4 people
	180°	Circulating air in large area, 5+ people

## HORIZONTAL ANGLE ADJUST

You can use the remote control to change the horizontal angle of the fan from a distance. Press the left or right arrows on the remote to adjust the horizontal angle.

This feature is only accessible using the **REMOTE**.


**NOTE:** The LEDs on the fan head will not illuminate when you use this feature.




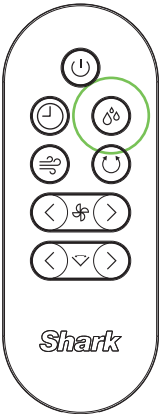





OUTDOOR MISTING

This misting feature is suitable for **OUTDOOR USE ONLY**.



Choose between 3 misting settings to best suit your needs. To change the misting settings, press the Misting  icon on the remote or the fan head to cycle through the settings.

To turn off misting, press the Misting  icon on the remote or the fan head until no LEDs are illuminated.



DISPLAY	SETTING	BEST FOR
	High-Pressure Consistent	Maximum cooling power
	Low-Pressure Consistent	Balance of cooling power and misting duration
	Interval	Longest misting duration

## TROUBLESHOOTING AND FREQUENTLY ASKED QUESTIONS

GENERAL USE	Why is the mist too wet?	<p>The misting feature is suitable for <b>OUTDOOR USE ONLY</b>. Do not attempt to mist indoors as this could cause slippery conditions or water damage.</p> <p>The fan is equipped with 3 mist settings designed to provide varying amounts of mist density. Press the misting  icon on either the remote or the fan head until you reach your desired setting.</p> <p>Adjusting the speed of the fan can affect the intensity of the mist.</p> <p>Try lowering the speed if the mist feels too wet.</p> <p>Sometimes, standing too close to the fan can make the mist feel wetter than it should. Try moving a few feet back and check if it improves the mist experience.</p>
	Why is the remote not working?	<p>When using the remote control, make sure it is pointed directly at the LEDs on the front of the fan.</p> <p>The fan may have entered IDLE mode. To preserve battery life, the fan will enter IDLE mode if left unplugged and powered off for 24 hours. In IDLE mode, the remote cannot be used to turn on the fan. To turn off IDLE mode and turn on the power, press the power button on top of the fan head.</p> <p>If your remote has lost its connection to the fan, you can easily reconnect it. Press and hold the power button on the fan head for 5 seconds, then press the right-hand side fan speed button on the remote while the LEDs on the fan head are flashing.</p> <p>If the remote still doesn't work, then try replacing the batteries in the remote.</p>
	Why are the remote and UI buttons not working?	<p>Make sure the fan has battery power by pressing the Power button. If the Battery LED indicator blinks red, then the fan needs to be charged. When the fan is charging, the battery LED will blink green.</p> <p>See the Battery Life and How To Use Your Fan sections for more detailed information on runtimes and battery indicators.</p> <p>If all the LEDs are flashing, the fan may be in Lock mode, which deactivates the fan to allow you to safely maintain it. To turn off Lock mode, press the Oscillation  icon on the fan and hold it down for 8 seconds. When Lock mode is successfully deactivated, the LEDs will display the Power On pattern. See the Maintenance section for more information.</p>
	Can I leave the fan outdoors?	<p>This fan is rain-resistant and will not be damaged by light rain. However, it is not suitable to withstand heavy rain or water submersion. <b>Do not charge or use your fan in the rain.</b></p>
	Why is the fan rattling?	<p>Ensure that the fan blade cap is fully installed before operating the fan. Please see the Maintenance section for more details.</p>
	The second LED indicator and the Battery LED (in amber) are flashing. What is wrong?	<p>This error state indicates an issue with the voltage of the charger. Please be sure to only use the provided Shark® charging cable and power supply.</p>
MAINTENANCE	Why do I have to activate Lock mode before maintenance?	<p>The fan must be in Lock mode when any maintenance is performed. Lock mode prevents the fan from accidentally powering on.</p>
	How often should I clean the fan?	<p>We recommend cleaning the fan every 6 months or as needed.</p>
	How do I maintain the misting hose?	<p>Every 12 months, use a damp cloth to clean the rubber seals on both ends of the misting hose to prevent buildup.</p>
	How often should I clean the misting nozzles?	<p>Clean the misting nozzles every 12 months or as needed. Using harder water will require more frequent cleaning. See Maintenance section for more information on cleaning misting nozzles.</p>
	Why isn't my fan misting effectively?	<p>Ensure the misting hose is securely connected to the water tank and fan head. See the Assembling Your Fan section for more information. The misting hose &amp; nozzles may clog if not maintained properly. See the Maintenance section for details on cleaning instructions. If the issue persists, the water tank filter may be clogged. Visit <a href="http://sharkclean.co.uk">sharkclean.co.uk</a> to order a replacement water tank filter.</p>

## MAINTENANCE

We recommend cleaning your water tank and misting hose with unscented soap and water every 3 months or as needed. Ensure you empty and dry the water tank and misting hose after every use.

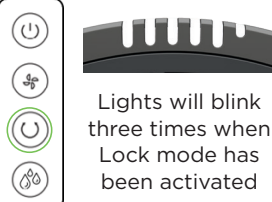
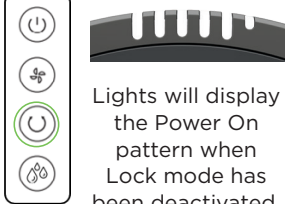
We recommend cleaning the misting nozzles every 12 months or as needed. Using harder water will require more frequent cleaning. To clean the misting nozzles:

1. Carefully remove each brass nozzle.  
**CAUTION:** Residual pressure may remain in the misting system.
2. To remove a nozzle, twist it anti-clockwise. **DO NOT** use a wrench or any other tool. **WARNING: CHOKING HAZARD.** Keep nozzles out of the reach of children.
3. Soak the nozzles in a solution of undiluted distilled white vinegar (5% acetic acid by volume) to loosen debris that may be clogging or restricting water flow. **DO NOT** soak the nozzles for more than 2 hours.
4. After soaking the nozzles in the solution, rinse them thoroughly with water.
5. Carefully reinstall each nozzle by twisting clockwise until you feel resistance.

We recommend cleaning the fan every 6 months or as needed.

If grille screw, bolt, or Hex Key have been lost, see the Hardware Specs section for information on how to replace any hardware.

- **LOCK MODE** must be activated prior to performing maintenance. This will temporarily block all fan functions until deactivated. Lock mode prevents the fan from accidentally powering on.

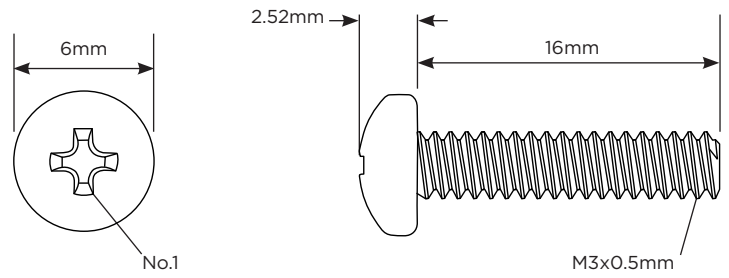
1. **Hold for 8 seconds**  
  
Lights will blink three times when Lock mode has been activated.
2. Place the fan upright on a flat, level surface in tabletop mode. Use the Phillips-head end of the **Hex Key** to remove the screw at the bottom of the **Fan Grille**. Set screw aside.
3. Rotate the **Fan Grille** anti-clockwise to remove it from the fan head. Set grille aside.
4. Remove the **Fan Blade Cap**. Hold the **Fan Blades** in place while rotating the fan blade cap clockwise to remove it from the shaft.
5. Remove the **Fan Blades** by gently pulling them out. With a slightly damp cloth, wipe down the interior parts of the fan.
6. Carefully replace the **Blades** onto the centre shaft.
7. Reinstall the fan blade cap. Hold the fan blades in place while rotating the fan blade cap anti-clockwise to reinstall it to the shaft.
8. Rotate the **Fan Grille** clockwise to secure it to the fan head.
9. Place the fan upright on a flat, level surface. Use the Phillips-head end of your **Hex Key** to replace and tighten the screw at the bottom of the **Fan Grille**.
10. **Hold for 8 seconds**  
  
Lights will display the Power On pattern when Lock mode has been deactivated.

## HARDWARE SPECS

### Grille Screw

For securing the grille to the fan

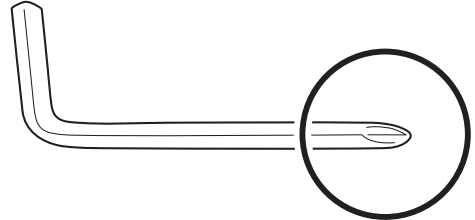
Drive Type	Phillips
Thread Size / Pitch	M3 x 0.5mm
Length	16mm



### Screwdriver

For driving the screw

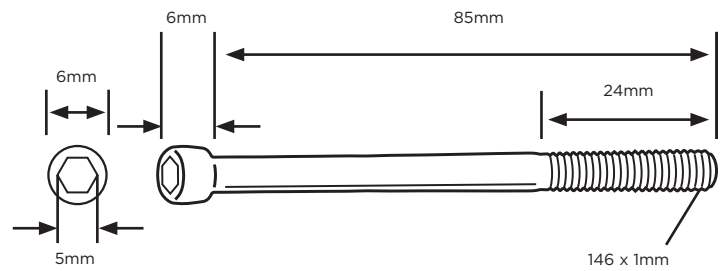
Drive Type	Phillips
Size	No. 1



### Bolt

For securing base to pole

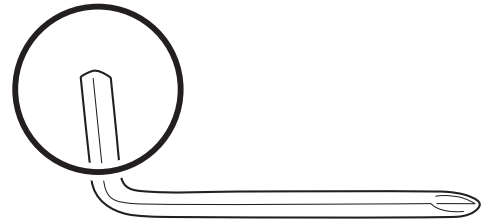
Drive Type	Hex
Thread Size / Pitch	M6 x 1mm
Length	85mm



### Hex Key

For driving the bolt

Drive Type	Hex
Size	5mm



## MANUFACTURER'S GUARANTEE

When a consumer buys a product in the United Kingdom, they get the benefit of legal rights relating to the quality of the product (your "legal rights"). You can enforce your legal rights against your retailer, including Shark if you bought your Shark appliance from [sharkclean.co.uk](http://sharkclean.co.uk). However, at Shark we are so confident about the quality of our products that we give the owner an additional, free parts and labour manufacturer's guarantee of up to 2 years.

A household appliance like a Shark Fan appliance constitutes a sizeable investment. Your new machine needs to work properly for as long as possible. The guarantee it comes with is an important consideration - and reflects how much confidence the manufacturer has in its product and manufacturing quality. The manufacturer's guarantee does not affect your legal rights.

### How long are new Shark machines guaranteed for?

Our manufacturer's guarantee lasts for one year from the date of purchase as standard, or for two years if you register your purchase with us within 28 days. There is information on how to register below.

### How do I register my Shark guarantee?

If you have purchased your Shark Fan appliance directly from [sharkclean.co.uk](http://sharkclean.co.uk) your guarantee is registered automatically. If you bought it from anywhere else, you can register your guarantee online within 28 days of purchase.

- To register online, please visit [sharkclean.co.uk/register-guarantee](http://sharkclean.co.uk/register-guarantee) or scan the QR code in your instruction manual.
- Keep a note of the date you purchased the machine.

### IMPORTANT:

- **Keep your receipt** if you bought your Shark Fan appliance from anywhere except [sharkclean.co.uk](http://sharkclean.co.uk). You will need it to claim under your guarantee.
- The free Shark guarantee only applies in the UK.

What are the benefits of registering my free Shark guarantee?

When you register your guarantee, you will get an extra year of cover. We'll also have your details to hand if we ever need to get in touch. If you further agree to receive communications from us, you can also receive tips and advice on how to get the best out of your Shark Fan appliance and hear the latest news about new Shark technology and launches.

### What is covered by the free Shark guarantee?

Repair or replacement (at Shark's option) of your Shark machine, including all parts and labour.

### What is not covered by the free Shark guarantee?

- Normal wear and tear.
- Accidental damage or faults caused by negligent use or care, misuse, neglect, careless operation or handling of the Shark appliance which is not in accordance with the Shark Operating Manual supplied with your machine.
- Damage caused by use of the Shark appliance for anything other than normal domestic household purposes.
- Damage caused by use of parts not assembled or installed in accordance with the operating instructions.
- Damage caused by use of parts and accessories which are not Shark Genuine Components
- Faulty installation (except where installed by Shark).
- Repairs or alterations carried out by parties other than Shark or its agents.

### How can I claim under the free Shark guarantee?

Contact our customer service helpline on 0800 862 0453. For service hours please visit our website. It's free to call, and you'll be put through to a Shark representative. You'll also find online support at [support.sharkclean.co.uk/](http://support.sharkclean.co.uk/).

The Shark representative will go through some troubleshooting with you, and if we conclude that the item has failed, we will send you a replacement part or a returns label to send the defective item back to us free of charge. When you have delivered the defective product to us, we will send you a replacement.

Please remember that the item will need to be boxed when you return it to us, which can be any suitable box; it does not have to be the original packaging.

### Where can I buy genuine Shark spares and accessories?

Shark spares and accessories are developed by the same engineers who developed your Shark Fan appliance.

You'll find a full range of Shark spares, replacement parts and accessories for all Shark machines at [sharkclean.co.uk](http://sharkclean.co.uk). Please remember that damage caused by the use of non-Shark spares may not be covered under your guarantee.



## IMPORTANT INFORMATION

### REGISTER YOUR PURCHASE



registryyourshark.com

- Get easier, faster product support and access to warranty information
- Access troubleshooting and product care instructions
- Be among the first to know about exclusive product promotions

### RECORD THIS INFORMATION

Model Number: \_\_\_\_\_

Serial Number: \_\_\_\_\_

Date of Purchase: \_\_\_\_\_  
(Keep receipt)

Store of Purchase: \_\_\_\_\_

### TECHNICAL SPECIFICATIONS

Voltage: 12V DC / 3A

Watts: 36W

**TIP:** You can find the model and serial numbers on the QR code label on the underside of the fan head.

#### BATTERY REMOVAL AND DISPOSAL

This product contains an integral lithium battery (not replaceable), and the remote control uses a lithium coin battery (replaceable) or 2x AAA battery (replaceable). When the remote batteries no longer have charge, it should be removed from the remote and recycled. **DO NOT** incinerate or compost the product with its integral battery or the remote batteries. When your remote battery needs to be replaced, dispose of it or recycle it in accordance with local ordinances or regulations. In some areas, it is illegal to place spent lithium batteries in the rubbish or in a municipal solid waste stream. Return spent batteries to an authorised recycling center or to retailer for recycling. Contact your local recycling center for information on where to drop off the spent battery.

Benefits of registering your product and creating an account:

### PLEASE READ CAREFULLY AND KEEP FOR FUTURE REFERENCE.

This Owner's Guide is designed to help you get a complete understanding of your new Shark® fan.

SharkNinja Europe Ltd,  
1st/2nd Floor Building 3150,  
Thorpe Park, Century Way,  
Leeds, England, LS15 8ZB  
sharkclean.co.uk

SharkNinja Germany GmbH,  
Rotfeder-Ring 9,  
60327 Frankfurt am Main,  
Germany  
sharkclean.eu

Illustrations may differ from actual product. We are constantly striving to improve our products; therefore the specifications contained herein are subject to change without notice.



This marking indicates that this product should not be disposed with other household wastes. To prevent possible harm to the environment or human health from uncontrolled waste disposal, recycle it responsibly to promote the sustainable reuse of material sources. To return your used device, please use the return and collection systems or contact the retailer where this product was purchased. They can take this product for environmentally safe recycling.

© 2025 SharkNinja Operating LLC. SHARK and FLEXBREEZE are registered trademarks in the United Kingdom of SharkNinja Operating LLC. PHILLIPS is a registered trademark of Phillips Screw Company