

# ***Shark* STEAMSPOT**

Scrubbing & Sanitising Steam Mop

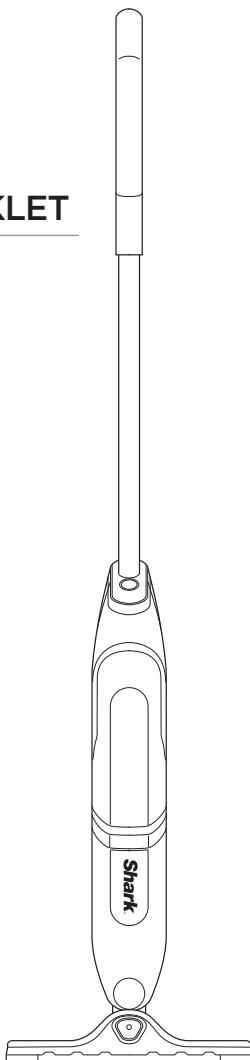
---

**S2000  
SERIES**

---

**INSTRUCTION BOOKLET**

---



To view **HOW-TO VIDEOS**  
scan QR Code.

# IMPORTANT SAFETY INSTRUCTIONS

FOR HOUSEHOLD USE ONLY. READ ALL INSTRUCTIONS BEFORE USE

---

## WARNING

To reduce the risk of fire, electric shock, injury, or property damage:

---

**GENERAL WARNINGS: WHEN USING YOUR SHARK Steam spot, BASIC SAFETY PRECAUTIONS SHOULD ALWAYS BE FOLLOWED, INCLUDING THE FOLLOWING:**



**WARNING:** Danger of scalding. The steam emitted from the steam mop is very hot and may cause scalding. Please use caution when using the steam mop.



**WARNING:** Keep steam mop away from children.



**WARNING:** Children should be supervised to ensure that they do not play with the appliance.

- DO NOT** leave the steam mop unattended when plugged in. **ALWAYS** unplug the power cord from the electrical outlet when not in use and before servicing.
  - DO NOT** use with damaged cord or plug. If steam mop is not working as it should or has been dropped, damaged, left outdoors, or dropped into water, return it to SharkNinja Operating LLC for examination and repair. Incorrect reassembly or repair can cause a risk of electrical shock or injury when used.
  - To protect against a risk of electric shock, **DO NOT** immerse the steam mop in water or any other liquids.
  - DO NOT** handle the plug or steam mop with wet hands or operate it without wearing shoes.
  - DO NOT** pull or carry by cord, use cord as a handle, close a door on cord, or pull cord around sharp edges or corners. **DO NOT** run steam mop over cord. Keep cord away from heated surfaces.
  - DO NOT** unplug by pulling on power cord. To unplug, grasp the plug, not the power cord.
  - Unplug before servicing.
  - ALWAYS** make sure the steam mop is **UNPLUGGED** when not in use
  - NEVER** fill the steam mop or attach the mop head when the steam mop is plugged into an electrical outlet. Unplug from the electrical outlet and allow to cool before you fill the mop.
  - When cleaning the exterior of the steam mop, unplug the power cord from the electrical outlet and clean the Steam mop with a dry or damp cloth. **DO NOT** pour water or use alcohol, benzene, or paint thinner on the steam mop.
  - To avoid circuit overload, **DO NOT** operate another appliance on the same socket (circuit).
  - To avoid scalding injuries, **ALWAYS** unplug and allow the steam mop to cool before removing tanks/steam pad.
  - This appliance can be used by persons with reduced physical, sensory or mental capabilities or lack of experience and knowledge if they have been given supervision or instruction concerning use of the appliance in a safe way and understand the hazards involved. Children shall not play with the appliance.
- ### USE WARNINGS
- When in use, **NEVER** turn the steam mop on its side.
  - Use the system only for its intended use
  - DO NOT** use for space-heating purposes.
  - DO NOT** use outdoors.
  - DO NOT** allow the steam mop to be used by children. Close attention is necessary when used near children, pets or plants

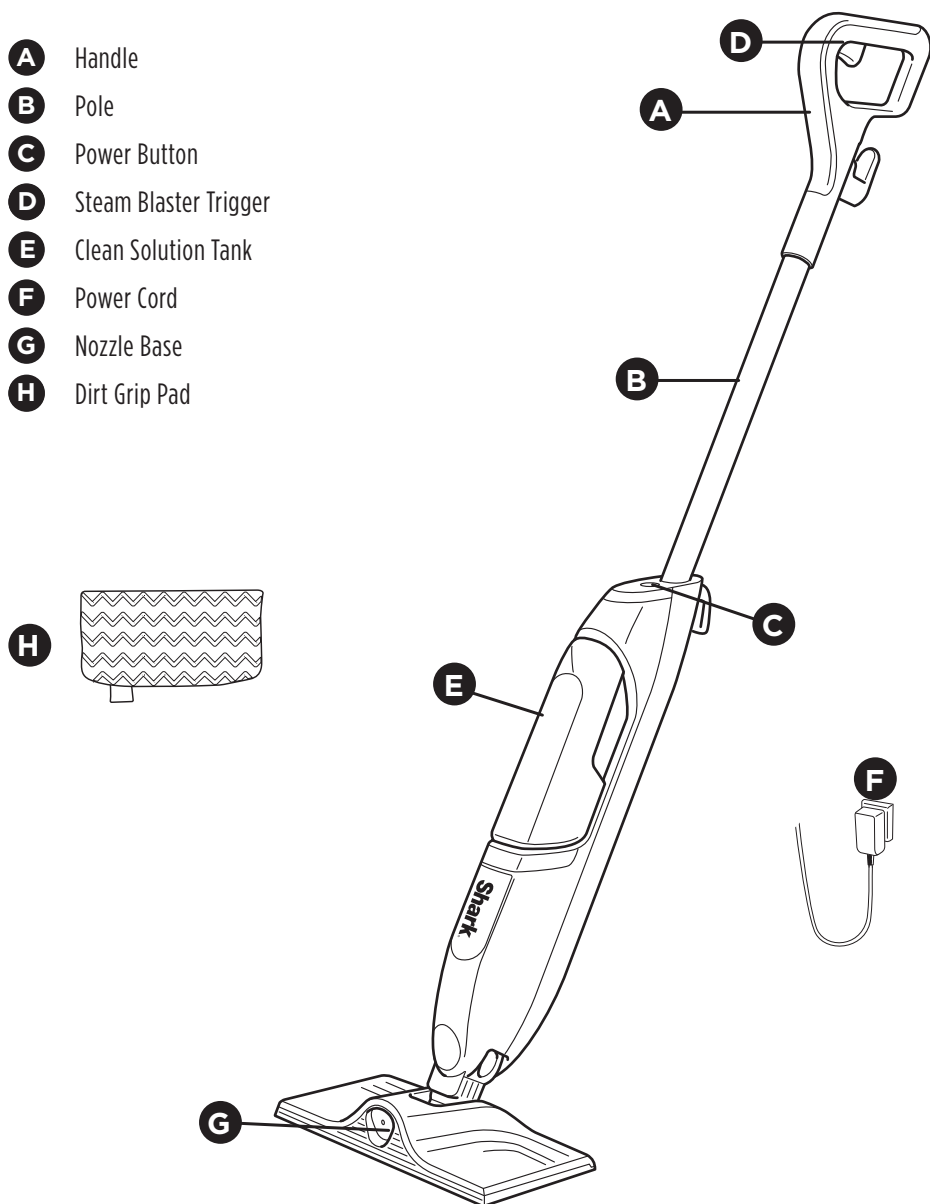
# SAVE THESE INSTRUCTIONS

---

19. Use only as described in this instruction manual.
20. Use only manufacturer's recommended accessories.
21. **DO NOT** put any objects into the steam nozzle openings.
22. **DO NOT** put hands or feet under the steam. It gets very hot.
23. Use **ONLY** on flat, horizontal surfaces. **DO NOT** use on walls, counters, or windows.
24. **DO NOT** use on leather, wax-polished furniture, synthetic fabrics, velvet, or other delicate, steam-sensitive materials.
25. **DO NOT** add cleaning solutions, scented perfumes, oils, or any other chemicals to the water used in the steam mop as this may damage it or make it unsafe for use. If you live in a hard-water area, we recommend using distilled water in your steam mop.
26. You can release the brush-roll after you have unplugged the steam mop and allowed it to cool.
27. Extreme caution should be exercised when using the steam mop to clean stairs.
28. **NEVER** use steam mop without a mop pad attached.
29. Keep your work area well lit.
30. Store steam mop indoors in a cool, dry place.
31. Keep hair, loose clothing, fingers, and all parts of body away from openings and moving parts.
32. **DO NOT** carry the steam mop while in use.
33. The steam emitted from the steam mop is very hot and may cause scalding. Please use caution when using the steam mop.
34. **DO NOT** use on unsealed wood or unglazed ceramic floors. On surfaces that have been treated with wax and on some unwaxed floors, the sheen may be removed by the heat and steam action.
35. **ALWAYS** test an isolated area of the surface to be cleaned before proceeding. We also recommend that you check the use and care instructions from the floor manufacturer.
36. **DO NOT** scrub any one area for an extended period.
37. **DO NOT** use the steam mop without the brush-roll and adding water to the water tank. When you use the steam mop for the first time, it might take longer than the normal 30 seconds to start steaming.
38. To prolong the life of your steam mop, we recommend using distilled water. Add **ONLY** water to the tank. Chemicals or cleaning solutions (including vinegar) may damage the steam mop and could be unsafe for you and your family.
39. The liquid or steam must not be directed towards equipment containing electrical components, such as the interior of ovens. Dispose of contents/ container with a licensed waste disposal site in accordance with the requirements of the local waste disposal authority.
40. Keep the appliance out of reach of children when it is energized or cooling down.
41. A hazard may occur if the appliance runs over the supply cord.
42. **DO NOT** use to pick up flammable or combustible liquids, such as gasoline, or use in areas where they may be present.

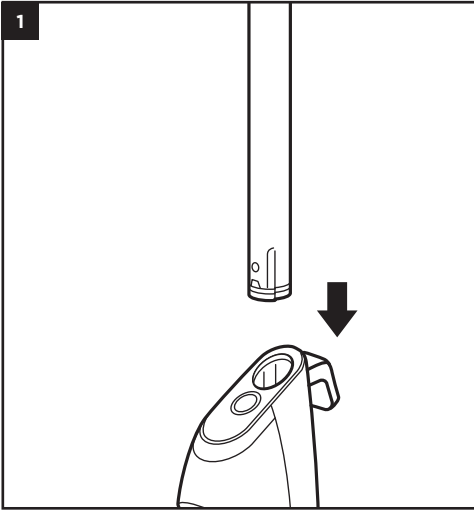
## WHAT'S INCLUDED

- A** Handle
- B** Pole
- C** Power Button
- D** Steam Blaster Trigger
- E** Clean Solution Tank
- F** Power Cord
- G** Nozzle Base
- H** Dirt Grip Pad



\*Highlighted pads sold separately for some product configurations

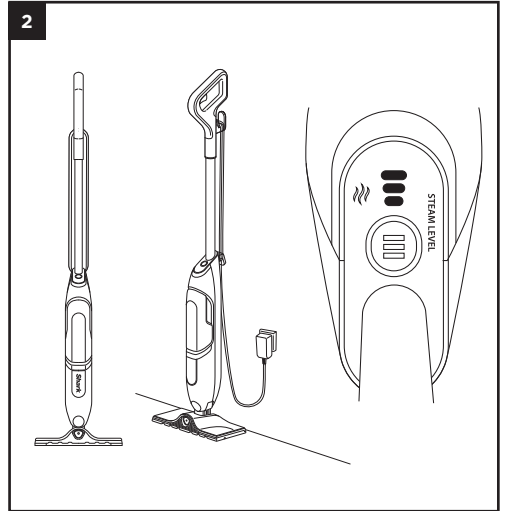
## ASSEMBLY



1. Align the pole with the opening in the main body and insert firmly until click into place.

**NOTE:** Do not leave the steam mop-plugged in when not in use.

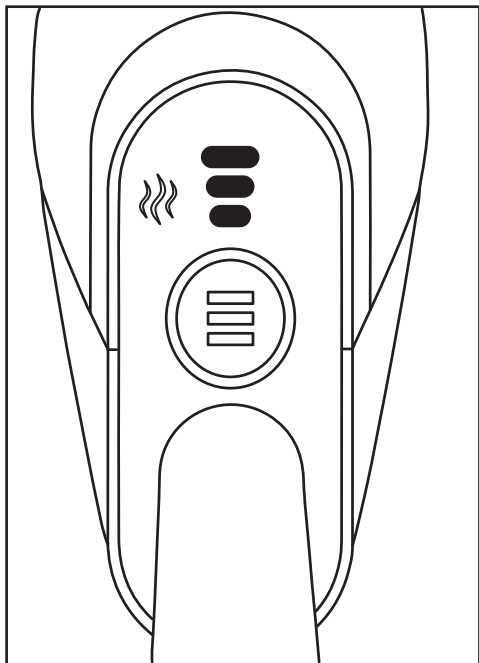
**NOTE:** To remove the handle, press the release button located on the back of the unit with a thin tool while pulling up on the handle.



2. Stand the unit upright on a flat surface near a wall outlet and plug in the cord. The LEDs on the main body will illuminate when the cord is plugged in. Make sure all parts are clicked securely into place.

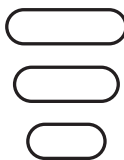
## USING YOUR STEAM SPOT

### SELECTING A MODE



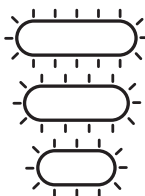
**NOTE:** When plugged in, the unit will not release steam until it is leaned back and is in use.

#### MODES:



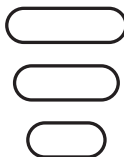
##### IN USE:

(LED LIGHTS ON, NUMBER OF LEDS ILLUMINATED WILL VARY PER MODE)



##### STANDBY:

(LED LIGHTS FLASHING)



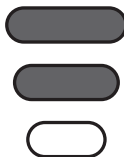
##### HIGH:

THE STEAM FLOW RATE WILL BE RUNNING AT HIGHEST PERFORMANCE



##### MEDIUM:

THE STEAM FLOW RATE WILL BE RUNNING AT A MEDIUM LEVEL AND SPEED.



##### LOW:

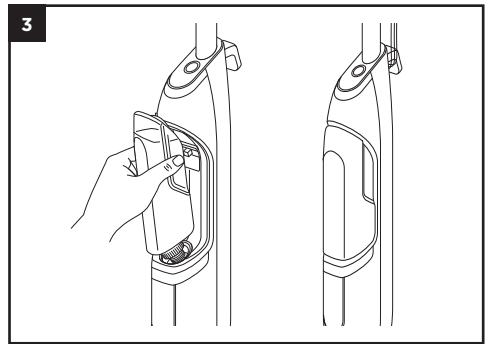
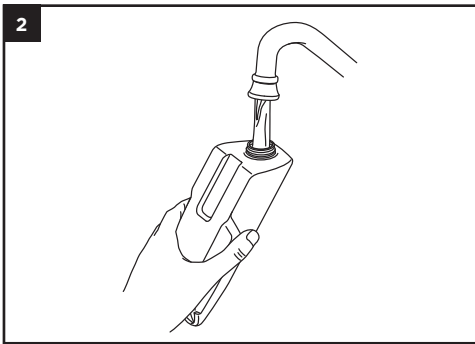
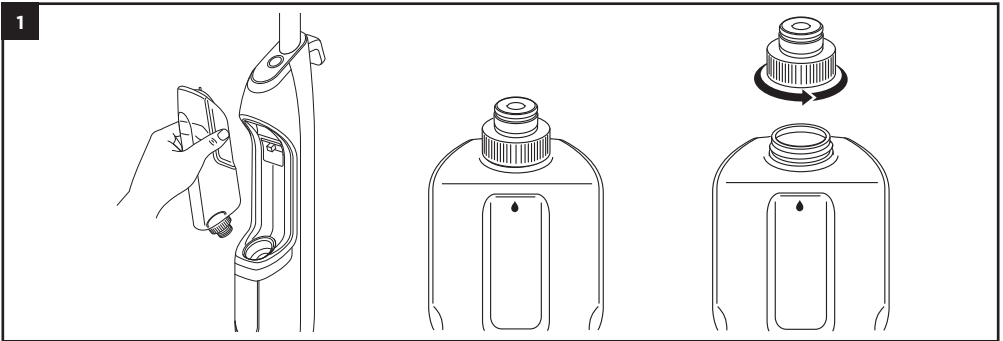
THE STEAM FLOW RATE WILL BE RUNNING AT A SLOW PACE AND LOWEST STEAM POWER

#### ERROR MESSAGES:

(REFER TO ERROR MESSAGE SECTION)

## USING YOUR STEAM SPOT

### FILLING THE CLEAN SOLUTION TANK



1. Pull out tank and unscrew cap.
2. Fill the water tank with **cold** or **room temperature** water to the WATER fill line.
3. Reattach the cap and rotate it until it is secure. Reinsert the tank until it clicks into place.

**NOTE:** Without sufficient water supply in the tank, the unit will not produce steam.

**NOTE:** Adding chemicals or cleaning solutions (including vinegar) may damage the steam mop and could be unsafe for use.

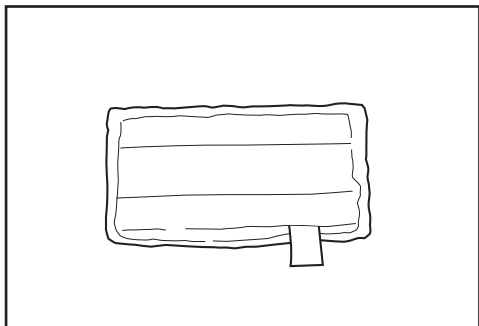
### TO SANITISE FLOORS\*

1. Attach a clean mop pad onto Steam Mop
2. Plug in the unit, tilt the handle down towards you, and press the mode button to select the HIGH setting.
3. Wait at least 20 seconds for the unit to begin producing steam.
4. To ready the unit for sanitisation, start cleaning with a forward and backward motion on an appropriate sealed hard floor surface. After three minutes, your unit will be ready to sanitise.
5. Move the floor nozzle slowly and evenly over the area to be sanitised while applying continuous downward pressure. Slowly repeat, making sure to cover the entire area to be sanitised with at least 15 strokes.

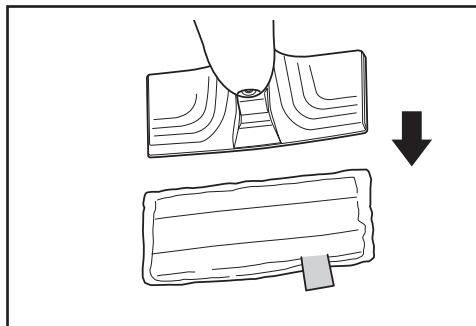
\*Sanitisation studies were conducted under controlled test conditions. Be certain to follow all directions for use carefully to fully sanitise with mop head set in the HIGH mode.

## USING YOUR STEAM SPOT

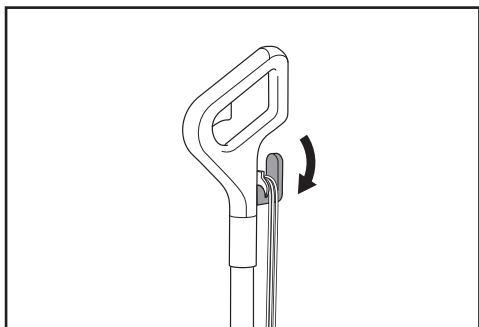
### HOW TO USE YOUR STEAM SPOT



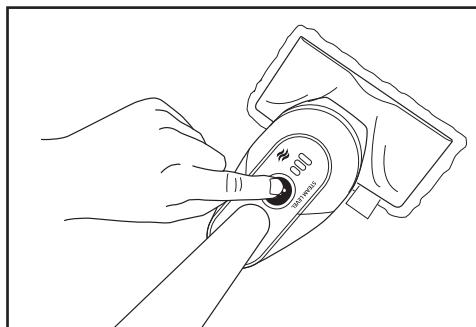
1. Place the pad on the ground with the velcro strips facing up.



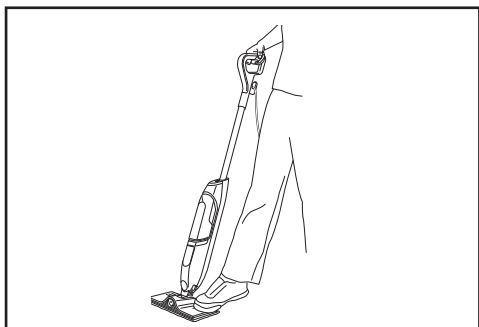
2. Align the nozzle over the pad and press down until the pad is attached. Make sure tag is oriented to the back of the unit.



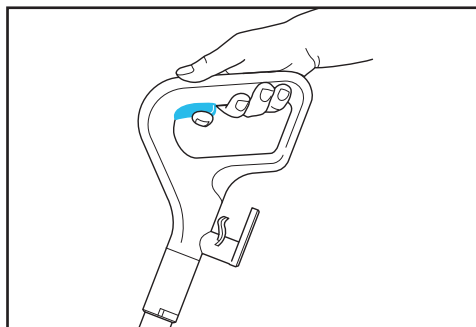
3. Twist the quick-release cord holder to unwrap the power cord. Plug the cord into a wall outlet.



4. Press the Mode button to select the steam level.



5. Step on the floor nozzle and tilt the handle back to activate the steam flow.






6. To activate the Steam Blaster, press the spray trigger on the handle to blast away tough stains.



## STEAM CONTROL

The Shark SteamSpot has 3 Steam Control modes so you can select the ideal amount of steam to use for each cleaning task. In MEDIUM mode, more steam will be produced than in LOW mode. In HIGH mode, the maximum amount of steam will be produced. Press the Mode button to select the steam level.

SETTING	IDEAL FOR THESE SEALED SURFACES	RECOMMENDED USAGE
 <b>LOW</b>	Laminate Hardwood Vinyl	Cleaning delicate surfaces Light cleaning and dusting Loosening and lifting light dirt
 <b>MEDIUM</b>	Marble Tile Stone	Basic, everyday cleaning. Cleaning large areas. Cleaning moderate and heavy-traffic areas.
 <b>HIGH</b>	Marble Tile Stone	Reaching hard-to-clean surfaces. Tough cleaning and removing stuck-on messes and stains. Deep cleaning heavy-traffic areas. Cutting through heavy dirt and grime and sanitising* floors.

### STEAM BLASTER:

1. To target tough messes with an extra burst of cleaning power, move the front of the nozzle 2 to 10 inches (25 cm) from the mess (fig. 1), then press and hold the spray trigger on the handle as needed. (Hold longer for the toughest messes.)
2. Before scrubbing, wait 5 seconds to let the steam blast penetrate the mess.

Tip: For more difficult messes, allow 20 seconds or more.

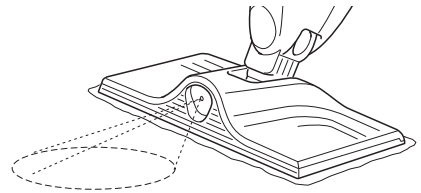


fig. 1

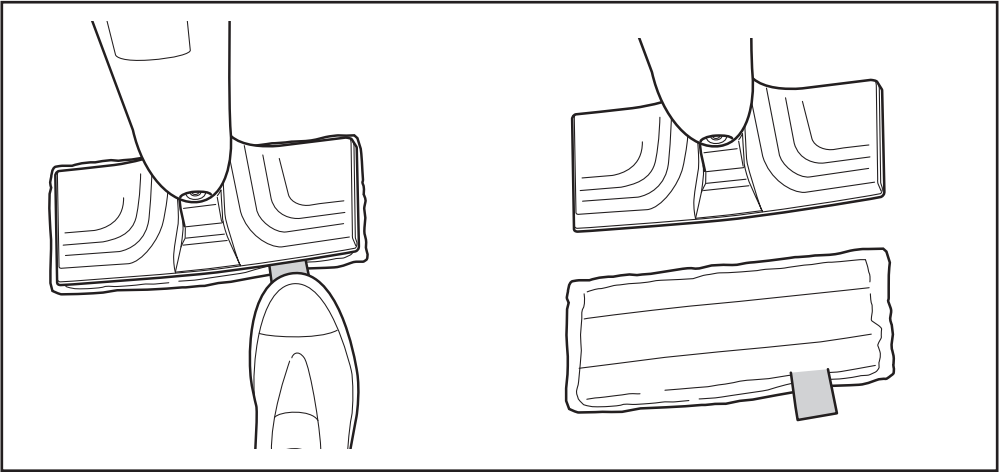
## CLEANING TIPS

<b>Top Tip</b>	For the most effective scrubbing and mopping, make cleaning passes in a forward direction.
<b>Stain Cleaning</b>	<p>Saturate heavily stained areas. Hold the mop in place over a stain for 2 to 3 seconds to saturate it, then run the nozzle over the area multiple times until the stain is fully removed. Repeat if needed.</p> <p><b>Normal dry stains:</b> Hold the mop in place over the stain for 5 seconds, then mop.</p> <p><b>Sticky/thick stains:</b> Hold the mop in place over the stain for 10 seconds, then mop.</p>
<b>Mopping</b>	Increase steam level when more saturation is needed

**NOTE:** If your floors are cloudy, streaky, or spotty after cleaning, it may be due to accumulated grease residue. See Maintenance section for more information.

## MAINTAINING YOUR STEAM SPOT

### DISASSEMBLY

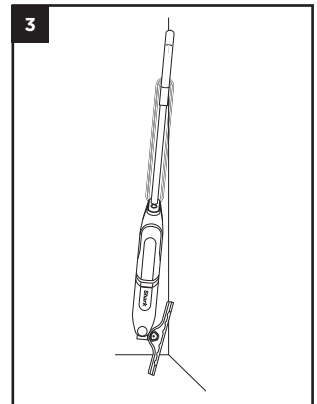
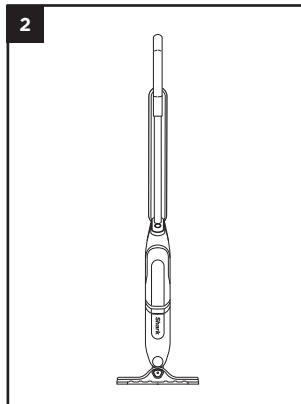
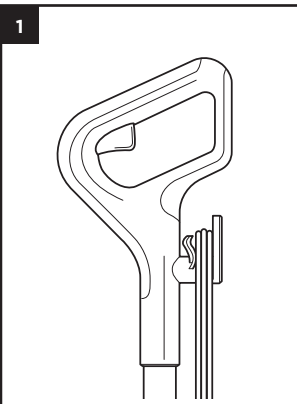


1. Step on the pad and lift the steam mop to disengage the pad.
2. Dirty pads can be machine-washed or hand-washed. Allow pads to air-dry completely before reinstalling.

### PAD CARE INSTRUCTIONS

Machine-wash pads separately with warm water, using liquid detergent. Do not clean pads in a dishwasher, as some detergents may cause the pads to leave streak marks on the floor. NEVER USE BLEACH, POWDERED DETERGENT, OR FABRIC SOFTENERS. This will damage the pads or leave a coating that will reduce their cleaning performance and absorbency. The pads should be line-dried or tumble-dried on a low setting, as this will extend the life of the microfibre fabric. Loose fibres can indicate wear of the microfibre fabric. DO NOT pull the loose fibres, as this can cause the weave to come undone. Simply trim the loose fibres with scissors. REPLACEMENT PADS For best cleaning results, we recommend replacing the pads every 4 months following normal use. As with any fabric, dirt particles, grease, friction, and repeated washing can cause the fibres to break down, and you may notice an increase in effort needed to push or pull the mop. You can purchase replacement mop pads and other accessories by visiting [sharkclean.co.uk](http://sharkclean.co.uk)

### STORAGE



1. When ready to store, wrap the power cord securely around the storage clips. Rotate the steam pad 90 degrees and flip it up for compact storage.

## TROUBLESHOOTING

PROBLEM	POSSIBLE REASONS & SOLUTIONS
<b>The steam mop isn't producing any steam.</b>	<p>The steam mop should be securely plugged into an electrical socket. Check your fuse or circuit breaker or try a different socket. Make sure the water tank is full, the unit is plugged in, and the Mode button is illuminated.</p> <p>If the mode lights are off, try a different electrical socket.</p> <p>If the lights are blinking, press the Mode button to select a steam mode.</p> <p>If the settings lights are illuminated steadily, wait 20 seconds for the unit to warm up.</p> <p>If after following the above steps the steam mop still does not produce any steam, contact Customer Service at +44 (0)800 862 0453 or visit <a href="http://sharkclean.co.uk">sharkclean.co.uk</a>.</p>
<b>The steam mop is producing intermittent steam.</b>	<p>This is normal. For more consistent steam, select the MEDIUM setting. Also make sure the water tank is full.</p>
<b>I can't select a steam mode.</b>	<p>Make sure the steam mop is plugged in and the settings lights are flashing. If your steam mop is producing steam but the mode lights are off, call Customer Service at +44 (0)800 862 0453.</p>
<b>Floors are cloudy, streaky, or spotty after steaming.</b>	<p>The pad might be dirty. Install a clean pad. If you washed the pad with powdered detergent, then it could be damaged and require replacement. Due to accumulated grease residue, the floor may require several cleanings with the steam mop.</p> <p>A more stubborn case may require you to rinse the floor with a mix of one part. *Please consult your flooring manufacturer's care and maintenance instructions before applying any cleaning products or solutions.</p>
<b>It's hard to push or pull the mop.</b>	<p>The mop might be hard to push or pull if the pad isn't wet enough. It should get easier to move the mop across the floor after it's been running for a few minutes.</p> <p>An overly dirty pad could also make it harder to push or pull the mop. We recommend using a clean pad.</p>
<b>The steam mop is vibrating or wobbling.</b>	<p>Turn the power OFF and unplug the unit, and wait for the pad to cool. Follow the instructions in the Assembling Your SteamSpot section to reinstall the pad.</p>
<b>The steam mop turns off on its own.</b>	<p>If your steam mop shuts off while in use, it likely needs to cool down. Perform the following steps before you restart cleaning:</p> <ol style="list-style-type: none"> <li>1. Turn the steam mop off, unplug it, and remove pads.</li> <li>2. Allow the unit to cool for a minimum of 30 minutes.</li> <li>3. Reinstall the pads. Plug in the steam mop, select a steam mode, and begin cleaning.</li> </ol>

Contact Customer Service at +44 (0)800 862 0453 or visit [sharkclean.co.uk](http://sharkclean.co.uk).

## THREE (3) YEAR LIMITED GUARANTEE

When a consumer buys a product in the UK, they get the benefit of legal rights relating to the quality of the product (your 'statutory rights'). You can enforce these rights against your retailer. However, at Shark we are so confident about the quality of our products that we give the original product owner an additional manufacturer's guarantee of up to three years (1 year standard plus 2 on registration). These terms and conditions relate to our manufacturer's guarantee only - your statutory rights are unaffected.

The conditions below describe the prerequisites and scope of our guarantee. They do not affect your statutory rights or the obligations of your retailer and your contract with them.

### Shark® Guarantees

A household appliance like a Steam Spot constitutes a sizeable investment. Your new machine needs to work properly for as long as possible. The guarantee it comes with is an important consideration - and reflects how much confidence the manufacturer has in its product and manufacturing quality.

Every Shark® machine comes with a free parts and labour guarantee. Our customer service helpline (0800 862 0453) is open from 9.00am to 6.00pm Monday - Friday. It's free to call, and you'll be put straight through to a Shark® representative. You'll also find online support at [www.sharkclean.co.uk](http://www.sharkclean.co.uk)

### How do I register my extended Shark® guarantee?

You can register your guarantee online within 28 days of purchase. To save time, you'll need the following information about your machine:

- Date you purchased the machine (receipt or delivery note)

To register online, please visit [www.sharkclean.co.uk/register-guarantee](http://www.sharkclean.co.uk/register-guarantee). Products purchased directly from Shark® are automatically registered.

### IMPORTANT

- This guarantee will only cover your product from the date of purchase.
- The Shark guarantee is only valid in the UK
- Please keep your receipt at all times. Should you need to extend your guarantee we will need your receipt to verify the information you have supplied to us is correct. The inability to produce a valid receipt may invalidate the extension.

### What are the benefits of registering my free Shark® guarantee?

When you register your guarantee we'll have your details to hand if we ever need to get in touch. If you further agree to receive communications from us, you can also receive tips and advice on how to get the best out of your Shark Steam Spot and hear the latest news about new Shark technology and launches.

If you register your guarantee online, you'll get instant confirmation that we've received your details.

### How long are new Shark® machines guaranteed for?

Our confidence in our design and quality control means that your new Shark Steam Spot is guaranteed for a total of up to three years (1 years plus 2 years on registration).

### What is covered by the free Shark® guarantee?

Repair or replacement (at Shark's discretion) of your Shark machine, including all parts and labour. A Shark guarantee is in addition to your legal rights as a consumer.

### What is not covered by the free Shark guarantee?

1. Blockages - for details of how to unblock your Steam Spot, please refer to the instructions.
2. Normal wear and tear such as pads, water tank, etc.
3. Accidental damage, faults caused by negligent use or care, misuse, neglect, careless operation or handling of the Steam Spot which is not in accordance with the Shark® instructions supplied with your machine.
4. Use of the Steam Spot for anything other than normal domestic household purposes.
5. Use of parts not assembled or installed in accordance with the operating instructions.
6. Use of parts and accessories which are not Shark® Genuine Components.
7. Faulty installation (except where installed by Shark®).
8. Repairs or alterations carried out by parties other than Shark® or its agents.

### What happens when my guarantee runs out?

Shark® does not design products to last for a limited time. We do appreciate that there may be a desire for our customers to want to repair their Steam Spot after the guarantee has lapsed. In this case please contact our Freephone customer service help line and ask about our out of guarantee programme, on 0800 862 0453.

### Where can I buy genuine Shark® spares and accessories?

Shark® spares and accessories are developed by the same engineers who developed your Shark Steam Spot. You'll find a full range of Shark® spares, replacement parts and accessories for all Shark® machines at [www.sharkclean.co.uk](http://www.sharkclean.co.uk).

Please remember that damage caused by use of non-Shark® spares is not covered under your guarantee.

## ORDERING REFILLS & PARTS

Replace the Steam Pads every 4 months.

Only use water with the Shark SteamSpot.

To order mop pads, please visit **sharkclean.co.uk** or scan the QR code.



### REGISTER YOUR PURCHASE



registeryourshark.com



### RECORD THIS INFORMATION

Model Number: \_\_\_\_\_

Date Code: \_\_\_\_\_

Date of Purchase: \_\_\_\_\_  
(Keep receipt)

Store of Purchase: \_\_\_\_\_

### TECHNICAL SPECIFICATIONS

Model: S2001UK 31

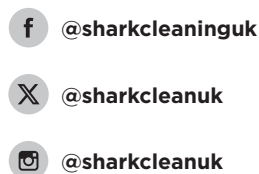
220-240V~, 50-60Hz, 1200W



[illegible]



To view **HOW-TO VIDEOS**  
scan QR Code.



## PLEASE READ CAREFULLY AND KEEP FOR FUTURE REFERENCE.

This Instruction Booklet is designed to help you get a complete understanding of your new Steam mopSteam Cleaner.

**SharkNinja Europe Ltd,**  
**1st/2nd Floor Building 3150, Thorpe Park,**  
**Century Way, Leeds, England, LS15 8ZB**  
**+44 (0)800 862 0453**  
**[www.sharkclean.co.uk](http://www.sharkclean.co.uk)**

**SharkNinja Germany GmbH**  
**Rotfeder Ring 9**  
**60327 Frankfurt am Main**  
**Germany**  
**[www.sharkclean.eu](http://www.sharkclean.eu)**

Illustrations may differ from actual product. We are constantly striving to improve our products, therefore the specifications contained herein are subject to change without notice.

SHARK is a registered trademark in the United Kingdom of SharkNinja Operating LLC.