

Shark®

Steam Lite® **STEAM MOP**

S3255UK

OWNER'S GUIDE




IMPORTANT SAFETY INSTRUCTIONS

For Household Use Only

WHEN USING YOUR SHARK® STEAM MOP, BASIC SAFETY PRECAUTIONS SHOULD ALWAYS BE FOLLOWED, INCLUDING THE FOLLOWING:

READ ALL INSTRUCTIONS BEFORE USING YOUR SHARK® STEAM MOP.

 **WARNING: DANGER OF SCALDING.**
Please use caution when using the steam mop. The steam emitted from the steam mop is very hot.

IMPORTANT:

This appliance is not intended for use by persons (including children) with reduced physical, sensory or mental capabilities, or lack of experience and knowledge, unless they have been given supervision or instruction concerning use of the appliance by a person responsible for their safety. Children should be supervised to ensure that they do not play with the appliance.


Children shall not use or play with this appliance. Close supervision is necessary to keep appliance out of reach of children during use.

WARNING: TO REDUCE THE RISK OF FIRE, ELECTRIC SHOCK OR INJURY:

- 1 Use the system only for its intended use.
- 2 **DO NOT** use outdoors.
- 3 **DO NOT** leave the appliance unattended when plugged in. The plug must be removed from the socket-outlet before cleaning or maintaining the appliance.
- 4 **DO NOT** allow the appliance to be used by children. Close attention is necessary when used near children, pets or plants.
- 5 Use only as described in this manual.
- 6 Use only manufacturer's recommended accessories.
- 7 If the supply cord is damaged, it must be replaced by SharkNinja Operating LLC, or its service agent, in order to avoid a hazard.
- 8 **DO NOT USE** if the appliance is not working, has been dropped, dropped into water, damaged, leaking or left outdoors.
- 9 **NO SERVICEABLE PARTS.** Incorrect re-assembly or repair can cause a risk of electrical shock or injury to persons when the appliance is used. Contact Customer Service.
- 10 To protect against a risk of electric shock, **DO NOT** immerse the steam mop into water or any other liquids.
- 11 **DO NOT** handle plug or steam mop with wet hands or operate appliance without shoes.
- 12 **DO NOT** pull or carry by power cord, use power cord as handle, close a door on the power cord, or pull the power cord around sharp edges or corners. Keep power cord away from heated surfaces.
- 13 **DO NOT** unplug by pulling on power cord. To unplug, grasp the plug not the power cord. Do not use extension cords or outlets with inadequate current carrying capacity.

- 14 **DO NOT** put any objects into openings. Do not use with any opening that is blocked.
- 15 **DO NOT** put hands or feet under the steam mop. Unit gets very hot.
- 16 Use **ONLY** on flat, horizontal surfaces. Do not use on walls, counters or windows.
- 17 **DO NOT** use on leather, wax polished furniture or floors, synthetic fabrics, velvet or other delicate, steam sensitive materials.
- 18 Liquid or steam must not be directed towards equipment containing electrical components, such as the interior of ovens.
- 19 **DO NOT** add cleaning solutions, scented perfumes, oils or any other chemicals to the water used in this appliance as this may damage the unit or make it unsafe for use. If you live in a hard water area, we recommend using distilled water in your steam mop.
- 20 When in use, **NEVER** turn the appliance over or on its side. **NEVER DIRECT STEAM TOWARDS PEOPLE, ANIMALS OR PLANTS.**
- 21 **NEVER LEAVE THE STEAM MOP IN ONE SPOT ON ANY SURFACE FOR ANY PERIOD OF TIME WHEN THE DIRT GRIP™ TRIANGLE PAD IS ATTACHED AS THIS WILL DAMAGE YOUR FLOORS.**
- 22 The steam mop has to be unplugged after use.
- 23 When cleaning the steam mop, unplug the power cord from the electrical outlet and clean with a dry or damp cloth. Do not pour water or use alcohol, benzene or paint thinner on the unit.
- 24 Extreme caution should be exercised when using this appliance to clean stairs.
- 25 Never use steam mop without the Dirt Grip™ Triangle Pad attached.
- 26 Keep your work area well lit.
- 27 Store steam mop indoors in a cool, dry place.

- 28 To avoid circuit overload, do not operate another appliance on the same mains circuit as the steam cleaner.
- 29 If an extension cord is absolutely necessary, an extension cord rated a minimum of 6 Amperes, with a minimum of 0.75 mm² copper conductors shall be used. Cords rated for less amperage may overheat. Care should be taken to arrange cord so that it cannot be pulled or tripped over.
- 30 **DO NOT** leave unattended when the system is connected to a power supply or electrical outlet. Turn off all controls before unplugging the unit.
- 31 **DO NOT** store unit with damp or wet Dirt Grip™ Triangle Pad attached. Never leave the steam mop in one spot on any surface for any period of time with a damp or wet Dirt Grip™ Triangle Pad attached as this will damage your floors.
- 32 Always unplug and allow the steam mop to cool before removing or changing mop heads.
- 33 Make sure that the water tank door is closed when using the appliance.

 **WARNING:** Your steam mop is designed to clean hard floor surfaces that will withstand high heat. Do not use on unsealed wood or unglazed ceramic floors. On surfaces that have been treated with wax or some no wax floors, the sheen may be removed by the heat and steam action. It is always recommended to test an isolated area of the surface to be cleaned before proceeding. We also recommend that you check the use and care instructions from the floor manufacturer.

SAVE THESE INSTRUCTIONS

This appliance complies with the WEEE-Directive 2012/19/EU on the disposal of electrical and electronic equipment (WEEE).



This marking indicates that this product should not be disposed with other household wastes throughout the EU. To prevent possible harm to the environment or human health from uncontrolled waste disposal, recycle it responsibly to promote the sustainable reuse of material sources. To return your used device, please use the return and collection systems or contact the retailer where this product was purchased. They can take this product for environmental safe recycling.

This appliance complies with the European directives for electromagnetic compatibility (EMC) 2014/30/EU and its revisions, as well as Low Voltage Directive (LVD) 2014/35/EU and its revisions.

This product has no on/off switch and operates when plugged into the main supply source. Disconnect the plug from mains after use.

Although the product is not provided with standby mode or off mode, it still fulfills the requirements of 1275/2008/EC – the directive for Eco-Design requirements – since according to technical justification, it is considered as inappropriate to provide standby and off modes when connecting to the mains. To reduce energy consumption be sure to unplug the unit after use.

Contents

Getting Started	5
Using Your Steam Lite® Steam Mop.....	8
Care of Your Steam Lite® Steam Mop.....	10
Troubleshooting	12
Warranty	14

**Thank you
for purchasing
the Shark®
Steam Lite®
Steam Mop.**

THIS BOOK COVERS MODEL NUMBER:

S3255UK

TECHNICAL SPECIFICATIONS

Voltage: 220-240V~, 50-60Hz

Power: 1050W

Water Capacity: 250 ml (8 oz.)

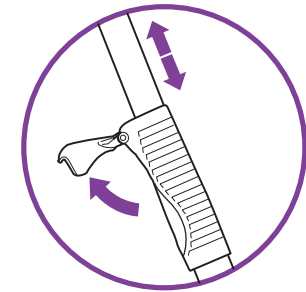
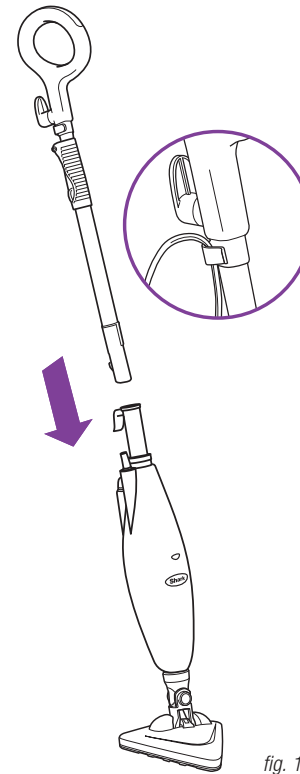
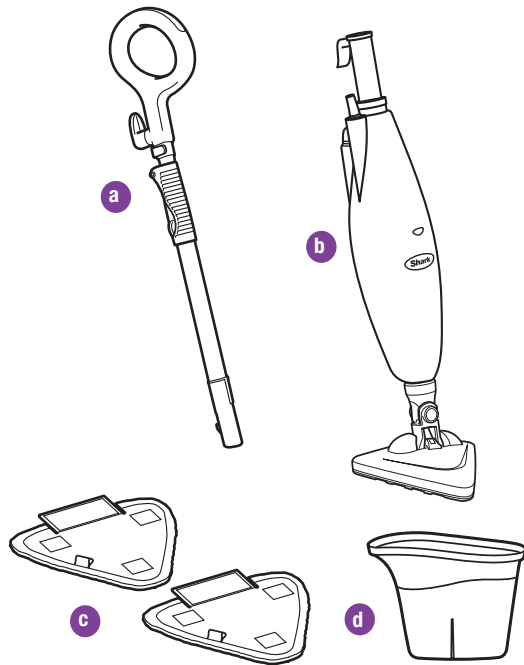


IPX4



Getting Started

When assembling your steam mop there may be a little water in or around the water tank. This is because we test all our steam mops 100% before you buy them, so you get a quality Shark® Steam Lite® Steam Mop.



FIRST THINGS FIRST, YOU NEED TO KNOW WHAT'S IN THE BOX YOU JUST OPENED:

- a** Handle & Extension Tube (Telescopic)
- b** Steam Mop Base
- c** Dirt Grip™ Triangle Pad (x2)
- d** Filling Flask

ASSEMBLY

- 1** Remove all the parts from the package. Verify all the listed parts are included.
- 2** Insert the assembled handle piece into the steam mop base. Push the tube base into mop body until you hear a click. **(fig. 1)**
- 3** For your comfort, you can adjust the height of the mop. Just lift the latch on the tube 90 degrees to the open position. Holding the handle, extend the tube to the desired height and then close the latch to the locked position. **(fig. 2)**

IMPORTANT: Never use the Shark Steam Lite® Steam Mop without attaching a Dirt Grip™ Triangle Pad to avoid damage to your floor and mop.

IMPORTANT: Do not use on unsealed wood or unglazed ceramic floors. On surfaces that have been treated with wax or some no wax floors, the sheen may be removed by the heat and steam action. It is always recommended to test an isolated area of the surface to be cleaned before proceeding. We recommend that you check the use and care instructions from the floor manufacturer.

Getting Started

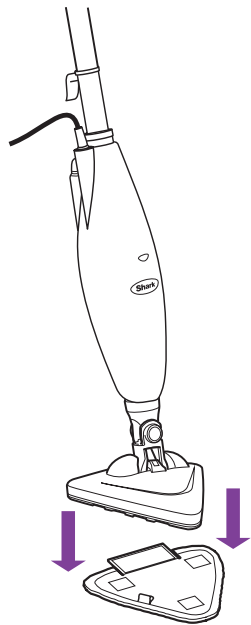


fig. 3

ATTACHING THE DIRT GRIP™ TRIANGLE PAD

- 1 Place the Dirt Grip™ Triangle Pad on the floor with the quick fastener strips facing up. Place the Steam Lite® Steam Mop on the top of the Dirt Grip™ Triangle Pad to attach. (fig. 3)

IMPORTANT: Only add water to the tank. Chemicals or cleaning solutions may be unsafe or cause damage.

IMPORTANT: Please wait 3-5 minutes for your Steam Lite® Steam Mop to cool off before removing the Dirt Grip™ Triangle Pad.

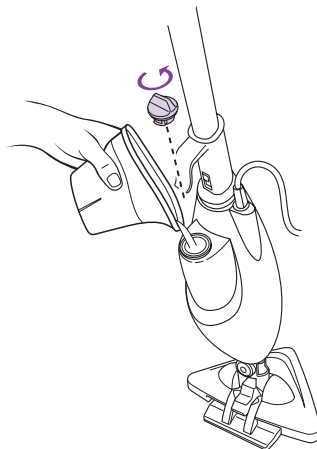


fig. 4

FILLING THE WATER TANK

IMPORTANT: Unplug the Steam Lite® Steam Mop before filling the water tank with water.

- 1 Remove the water tank cap by turning it counter-clockwise to the unlocked position. (fig. 4)
- 2 A filling flask is included with your Steam Lite® Steam Mop to make filling the water tank easy. Fill the flask with water and pour it into the tank. Keep the water level under the MAX' fill line.
- 3 Replace the water tank cap and turn it clockwise to the locked position.

Using Your Steam Lite® Steam Mop

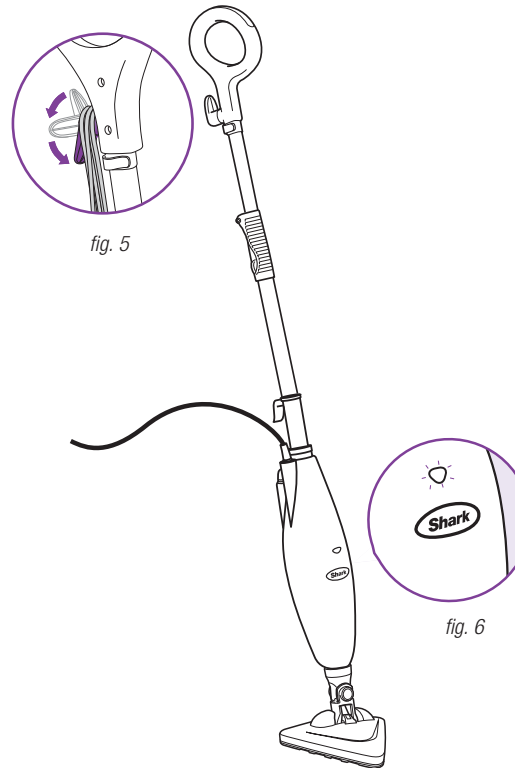


fig. 5

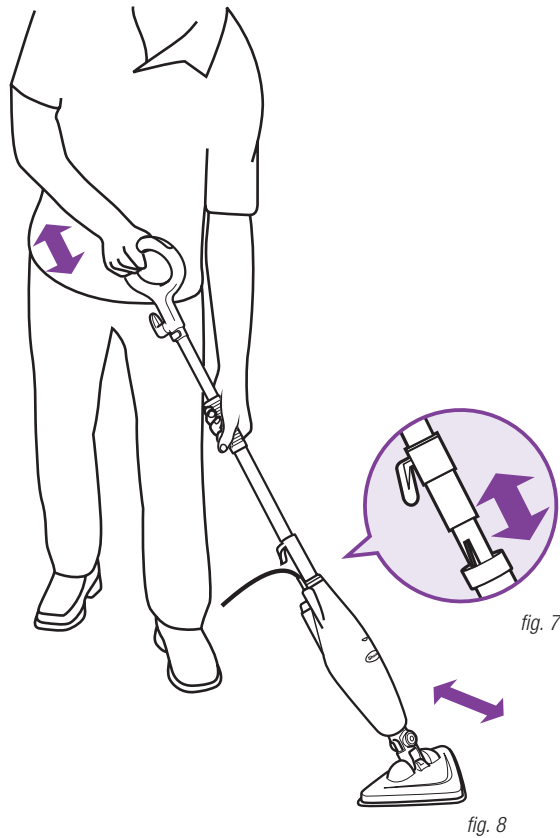
fig. 6

IMPORTANT: Your steam mop needs water to make steam! Never use your steam mop without water in the tank.

Sweep or vacuum your floors prior to cleaning with your Steam Lite® Steam Mop.

- 1 Pull and twist the quick release cord holder to unwrap the power cord completely. (fig. 5) Plug into a 220-240 volt electrical outlet. The "On" light will turn blue. If the light does not turn on, reference the troubleshooting section on page 12. (fig. 6)

Using Your Steam Lite® Steam Mop - cont.

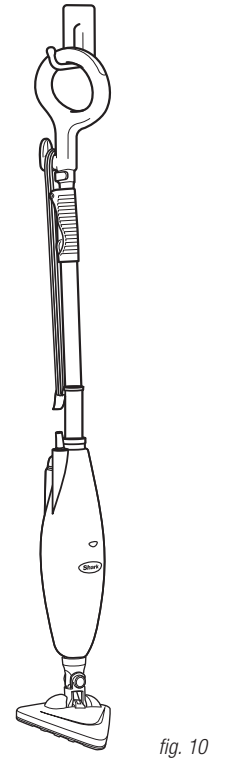
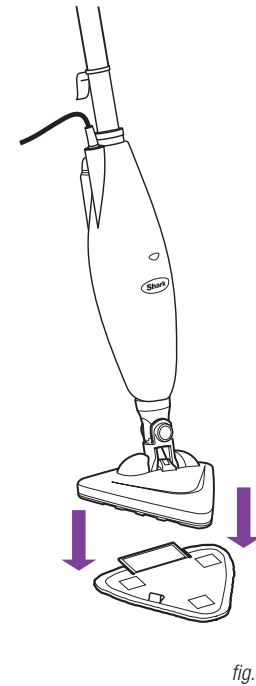


- 2 Wait 30 seconds for the boiler to heat the water. Pump the handle a few times to prime the pump, activate steam and moisten the Dirt Grip™ Triangle Pad. (fig. 7)
- 3 Mop with a forward and backward motion to customize steam output automatically. (fig. 8)

IMPORTANT: Never leave the Shark® Steam Lite® Steam Mop with a damp/wet Dirt Grip™ Triangle Pad on any floor surface for any amount of time as this may damage the floor.

- 4 When you need an extra burst of steam to clean a stuck-on stain, you can use the Steam Blaster™ feature. Lower the mop body forward, toward the mop head. This will cause the the Steam Blaster to emit a concentrated blast of steam. To stop the Steam Blaster spray, simply raise the handle into its original position and continue cleaning.
- ⚠ **CAUTION:** While in Steam Blaster mode, do not leave stationary for more than one minute.
- ⚠ **CAUTION:** Do not scrub any one area for an extended period of time.

Care of Your Steam Lite® Steam Mop



AFTER USE AND STORAGE

- 1 When you have finished using the Shark® Steam Lite® Steam Mop, unplug the cord from the outlet and place the mop into the upright position and let the unit cool 3-5 minutes. Release steam by pumping the handle several times.
- 2 Carefully separate Dirt Grip™ Triangle Pad from steam mop, avoiding contact with the hot Dirt Grip™ Triangle Pad or dirt. (fig. 9)
- 3 Empty the water tank before storage. Remove the water tank cap and empty the tank over a sink. Replace the water cap.

- 4 To store the cooled Shark® Steam Lite® Steam Mop, hang on a large hook. (fig. 10)

NOTE: If you want to store the Shark® Steam Lite® Steam Mop standing upright, make sure it is leaning against a wall for added support and safety. Always store your Shark® Steam Lite® Steam Mop with the Dirt Grip™ Triangle Pad removed. Store away from children and high traffic areas.

Care of Your Steam Lite® Steam Mop

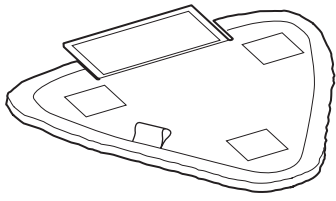


fig. 11

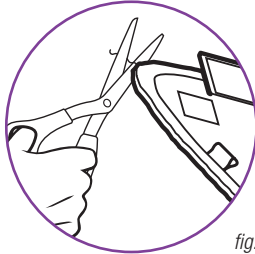
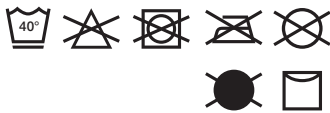


fig. 12



CARE OF YOUR DIRT GRIP™ TRIANGLE PAD

IMPORTANT: The Dirt Grip™ Triangle Pad may be very hot from the steam. Use caution when removing. Let the unit cool for 2-3 minutes.

Care

Machine-wash the Dirt Grip pads separately with warm water using liquid detergent.

NEVER USE BLEACH, POWDERED DETERGENT, OR FABRIC SOFTENERS as they may damage or leave a coating on the Dirt Grip pads that will reduce their cleaning performance and absorbency. Dirt Grip pads should be line-dried or tumble-dried on a low setting, as this will extend the life of the microfibre fabric (fig. 11).

Loose fibres can indicate wearing of the microfibre fabric. Do not pull the loose fibres, as this can cause the weave to come undone. Simply trim the loose fibres with scissors (fig. 12).

Replacement Dirt Grip pads

For best cleaning results, we recommend replacing your Dirt Grip pads every 3 to 4 months following normal use. As with any fabric, dirt particles, grease, friction, and repeated washing can cause the fibres to break down, and you may notice an increase in the effort needed to push or pull the Steam Mop.

Trouble Shooting

PROBLEM	POSSIBLE REASONS & SOLUTIONS
The Steam Lite® Steam Mop will not turn-on.	Your steam mop should be securely plugged into an electrical outlet only. Check the Mains fuse or circuit breaker.
Steam Lite® Steam Mop will not make steam.	Is there water in the water tank? If not, add water to your steam mop following instructions on page 7.
Steam Lite® Steam Mop leaves water on the floor.	Check to see if your Dirt Grip™ Triangle Pad is too wet. We recommend you unplug the steam mop and change the Dirt Grip™ Triangle Pad. Make sure the Dirt Grip™ Triangle Pad is attached correctly.
Steam Lite® Steam Mop left white spot on the floor.	Do not leave your steam mop on the floor with a damp or wet Dirt Grip™ Triangle Pad. If you're using tap water, we recommend switching to distilled water. Make sure the cap is secured on the water tank.
Floors are cloudy, streaky or spotty after steaming.	The Dirt Grip™ Triangle Pad might be dirty. Change the Dirt Grip™ Triangle Pad. If you washed the Dirt Grip™ Triangle Pad with powder detergent, then your Dirt Grip™ Triangle Pad could be damaged and require replacement. This could also be an indication of prior soap or grease residue that has accumulated on the floor. As our steam mops use only a small amount of water, it may not be wet enough to rinse off the accumulation that the steam is bringing to the surface. We suggest rinsing the floor with nothing but water, letting it dry, and then steam mopping again with a clean Dirt Grip™ Triangle Pad. One or more rinses generally removes the residue. A more stubborn case may require you to rinse the floor with a mix of one part vinegar and two parts water.
Steam Lite® Steam Mop is hard to push.	Make sure the steam Dirt Grip™ Triangle Pad is attached correctly. Check to see if the Dirt Grip™ Triangle Pad is excessively dirty. Replace if the Dirt Grip™ Triangle Pad is too dirty or wet.

Euro-Pro Europe Limited,
Century Way,
Thorpe Park,
Leeds, LS15 8ZB, UK
+44 (0)800 862 0453
www.sharkclean.eu

Shark and Steam Lite are registered trademarks
of SharkNinja Operating LLC.

Dirt Grip is a trademark of SharkNinja Operating LLC.

COPYRIGHT 2019 © SharkNinja Operating LLC

Illustrations may differ from actual product. We are
constantly striving to improve our products, therefore
the specifications contained herein are subject to
change without notice.

PRINTED IN CHINA

SN00059b_S3255UK_IB_250220_New address

