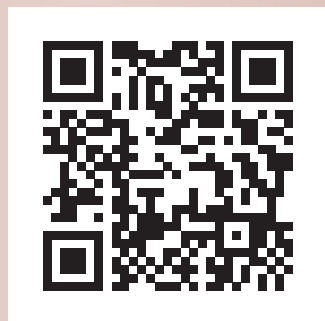


Shark[®]

STYLE **iQ** STYLING GUIDE



Get to know your Shark[®] STYLEiQ Hairdryer & Intelligent Stylers



How it works



TIP: Press and hold **Cool Shot** as desired to lock in your style.
All 3 red temperature lights will be OFF when **Cool Shot** is engaged.

What's in the box?



Shark® STYLEiQ Hairdryer 1

Intelligent Stylers

Concentrator: Dry and shape in fewer steps 2

Diffuser: Fast, even drying from root to tip 3

Not all accessories are included with this model.
To order additional accessories, visit sharkbeauty.co.uk.

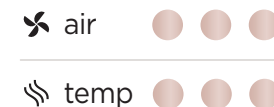
STYLING WITH THE STYLEiQ HAIRDRYER AND STYLER

When using Intelligent Stylers, Shark® STYLEiQ intelligently sets heat and airflow for faster, healthier styling.

STYLEiQ Hairdryer
high airflow,
medium temperature



Concentrator
high airflow,
high temperature



Diffuser
low airflow,
low temperature



Did you know? You can adjust our recommended **iQ** temperature or airflow settings to experiment with different results or to follow your normal routine.

Get to know your Concentrator



To explore product info, styles, how-tos, inspiration, tips, tricks and more, scan the QR code.

Concentrator



Dry and shape in fewer steps.

Swivel concentrator for easy styling

Rotate the concentrator to ensure airflow is always in line with a round brush when styling.



ADJUST THE AIRFLOW

Pre-Styling Mode

Slide lever left to retract nozzle.

- Wider airpath for a gentle, all-over quick dry

Precision Styling Mode

Slide lever right to extend nozzle.

- Narrow, targeted airpath for smoothing, shaping and bending



TIP: Press and hold **Cool Shot** as desired to lock in your style. All 3 red temperature lights will be OFF when **Cool Shot** is engaged.

Smooth & Style

Press the Concentrator into the head of the hair dryer until it clicks into place.

START WITH TOWEL-DRIED HAIR.

Apply hair products or styling agents as desired.

1.

Gentle-dry with the nozzle retracted, applying airflow from roots to ends.



2.

When excess moisture is gone, extend nozzle and start styling with a round brush. Slide the lever to move from pre-styling mode to precision styling mode. Rotate the concentrator so airflow is always in line with the round brush.



3.

Apply heat in a downward motion for smoothing. Apply heat at ends for shaping and bending.

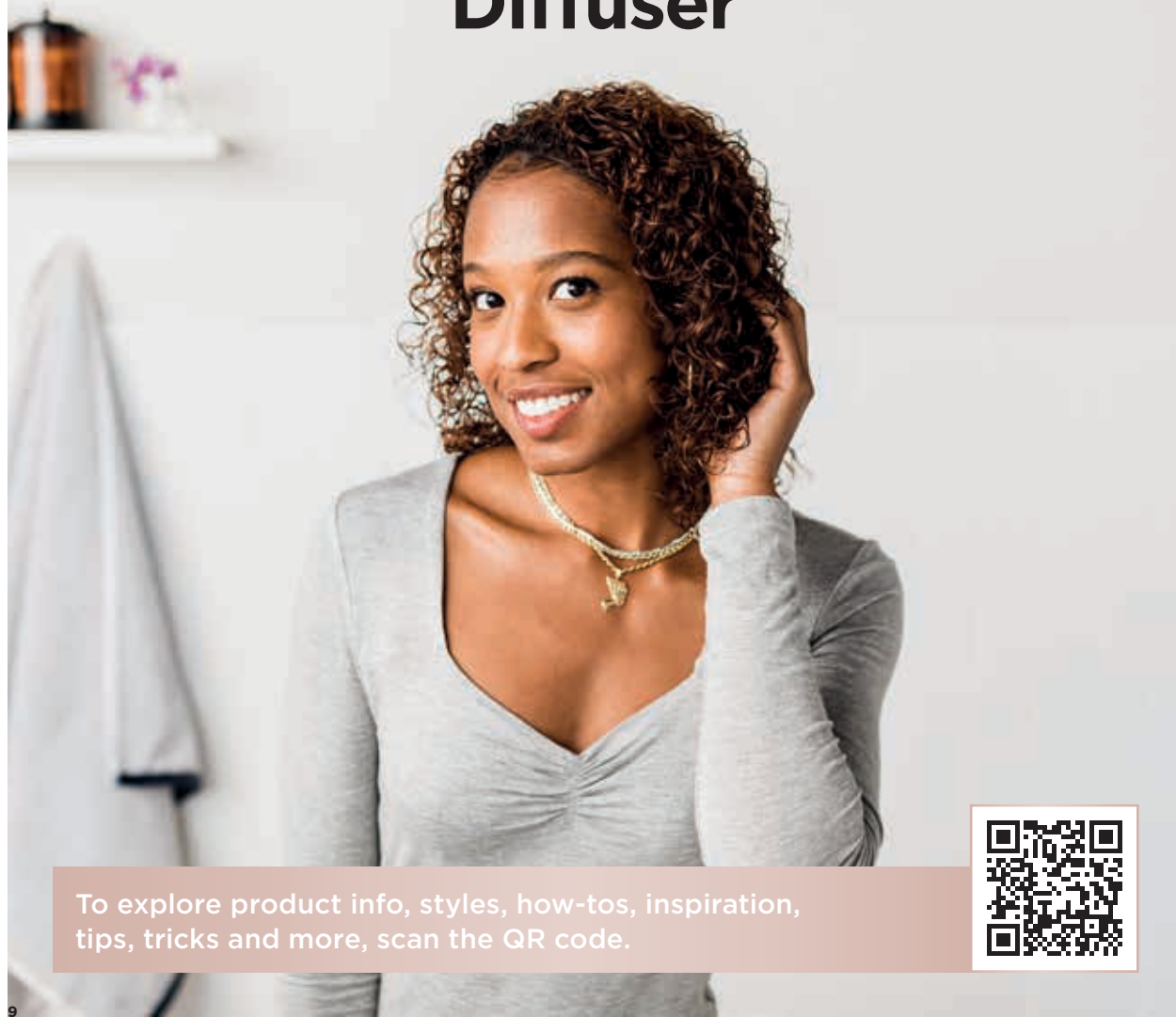


4.

Finish styling by setting shape at ends with Cool Shot.



Get to know your Diffuser



To explore product info, styles, how-tos, inspiration, tips, tricks and more, scan the QR code.

Diffuser



Fast, even drying from root to tip.



PERFECT YOUR CURLS

Slide lever to retract or extend prongs as desired.

Retract prongs for:

- Shorter, finer hair
- Less heat on the scalp

Extend prongs for:

- Longer, thicker hair
- Reaching and lifting the root



TIP: Press and hold **Cool Shot** as desired to lock in your style. All 3 red temperature lights will be OFF when **Cool Shot** is engaged.

Lift & Define

Press the Diffuser into the head of the hair dryer
until it clicks into place.

START WITH TOWEL-DRIED, DETANGLED HAIR.

Apply hair products or styling agents as desired.

1.

Working around your head, bunch curls from ends between the petals of the diffuser, bringing it up to the roots for even drying.



2.

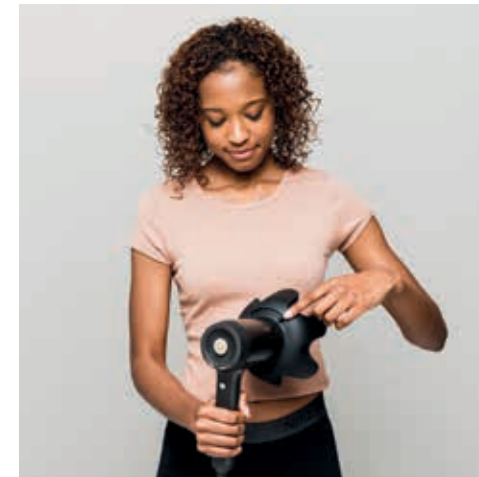
Rotate the diffuser back and forth, reaching up to roots. Pause and hold.



3.

If desired for more volume, extend prongs to lift roots higher.

Pro Tip: Gather hair in diffuser with prongs retracted, then extend them when you reach the roots to increase grab and maximize flow.



4.

If desired, flip upside down and bunch from below.

Keep the integrity of your natural curls by switching between low temp and the Cool Shot button.

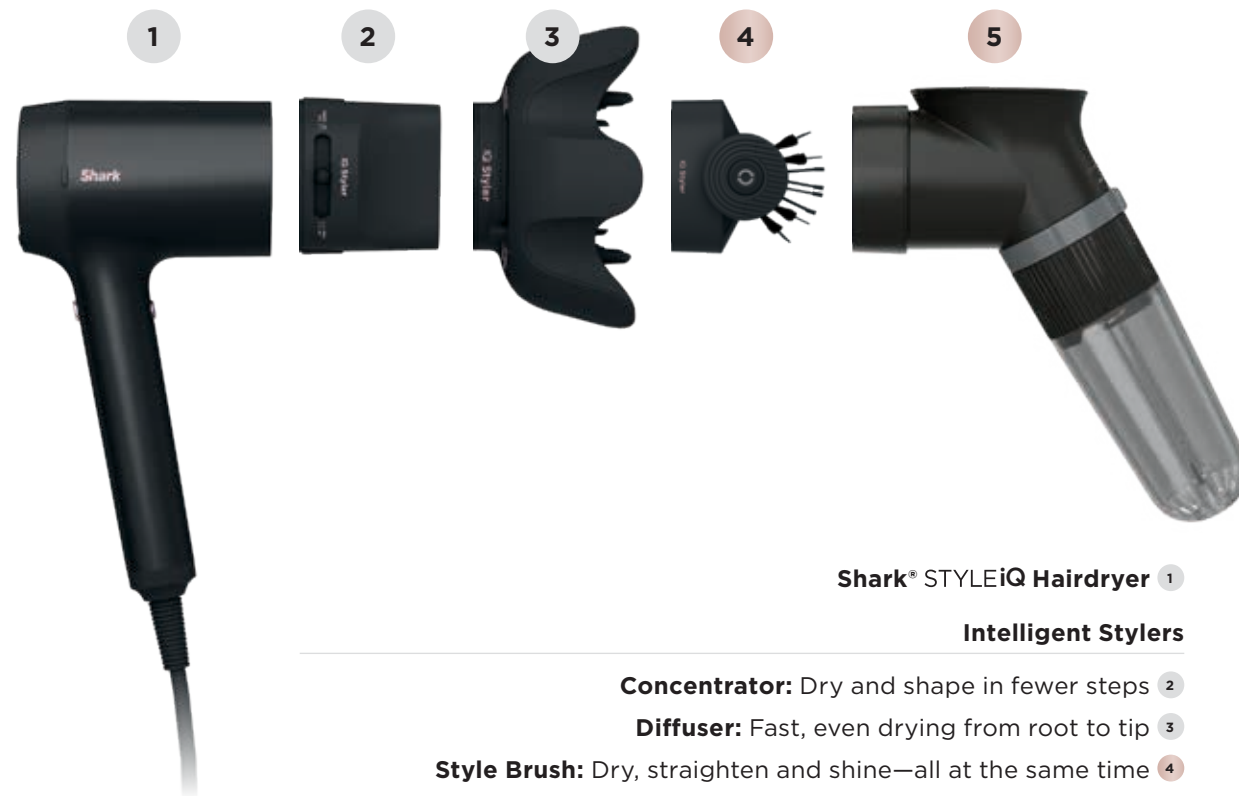


Do you love your Shark® STYLEiQ Hairdryer & Intelligent Stylers?



Shop our other Stylers for more styling options.

Discover the full range of intelligent stylers



Shark® STYLEiQ Hairdryer 1

Intelligent Stylers

Concentrator: Dry and shape in fewer steps 2

Diffuser: Fast, even drying from root to tip 3

Style Brush: Dry, straighten and shine—all at the same time 4

AirWave: Long-lasting waves with less heat 5

● In the box

● Sold separately

Get to know your Style Brush



To explore product info, styles, how-tos, inspiration, tips, tricks and more, scan the QR code.

Style Brush



Dry, straighten and shine—all at the same time.

Smoothing Bristles

On the outer edges for grabbing, smoothing and shining.

Detangling Bristles

In the middle for combing and detangling.

360° Button

Press and hold, then rotate brush to your desired angle.

Use Horizontally

For rough drying, finishing, and shaping your ends.

Use Vertically

For more reach towards the back of the head.



TIP: Press and hold **Cool Shot** as desired to lock in your style. All 3 red temperature lights will be OFF when **Cool Shot** is engaged.

Sleek & Shine

Press the Style Brush in horizontal position into the head of the hair dryer until it clicks into place.

START WITH TOWEL-DRIED, DETANGLED HAIR.

Apply hair products or styling agents as desired.

1.

Loose-dry by pulling the brush through hair with the Detangling Bristles. Pull through to ends.



2.

Press the iQ 360° button, then turn the brush vertically as desired to maximize reach to the back of your head.

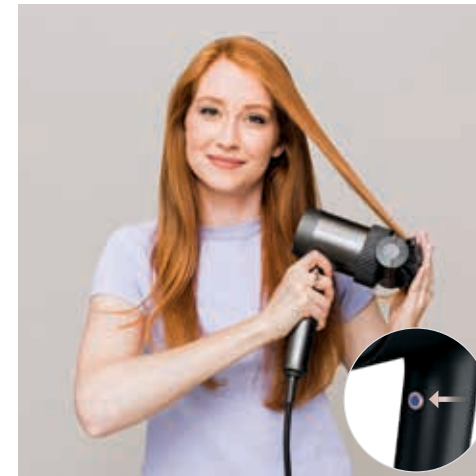
Pro Tip: Section hair as desired, drying underneath first to build volume at the crown.



3.

For smoothing and shining, brush from top to bottom. Use a rounding motion to engage the Smoothing Bristles and grab hair.

Pro Tip: Toggle to low airflow and hold ends around bristles. Set shape by pressing the Cool Shot button.



4.

For volume and shape, scoop from underneath the roots.

Pro Tip: Toggle to low airflow and hold ends around bristles. Set shape by pressing the Cool Shot button.



Get to know your AirWave



To explore product info, styles, how-tos, inspiration, tips, tricks and more, scan the QR code.

AirWave



Long-lasting waves with less heat.

Creates effortless beachy waves using touchless, hair-healthy, STYLEiQ technology.

AirWave Opening

Place sectioned hair inside the AirWave cup for a touchless waving experience.

Adjust Wave Direction

Curl towards or away from your face. For a tousled look, alternate directions from one wave to the next.



STYLEiQ works by shaping your hair into a gentle wave and drying in place—no tugging, no heat damage.



TIP: Press and hold **Cool Shot** as desired to lock in your style. All 3 red temperature lights will be OFF when **Cool Shot** is engaged.

Master the beach wave

Press the AirWave into the head of the hair dryer until it clicks into place.

1.

Begin with mostly dry hair. Select wave direction by turning the lever according to the graphic below.



2.

Section hair in 1- to 2-inch sections. Use small sections that are even and square at the root.

Pro Tip: Try different-sized sections to find your favourite wave.



3.

Turn on the hair dryer. Place section of hair into the AirWave opening. Guide slowly, lifting it up to the root.



4.

Hold AirWave upward for 20 seconds, for the best results. Then press Cool Shot to set your style. Slowly pull styler away from hair to expose the wave.

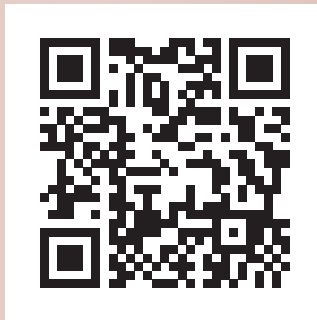
Pro Tip: Use setting or holding spray as desired.



PREP YOUR HAIR BY LEAVING A LITTLE MOISTURE BEHIND AFTER DRYING WITH YOUR SHARK® STYLEiQ.

For curly hair types, we recommend smoothing and drying with the **Brush**. Avoid using the AirWave on flat-ironed hair.

Looking for more
inspiration, tips and tricks?
Go to sharkbeauty.co.uk
or scan the QR code.



HD110UK_StyleGuide_MP_210729_MV5

© 2021 SharkNinja Operating LLC.
SHARK is a registered trademark of SharkNinja Operating LLC.

For accessories and replacement parts, visit sharkbeauty.co.uk